

CAMP SPRINGS, MARYLAND

ILS or LOC RWY 19L

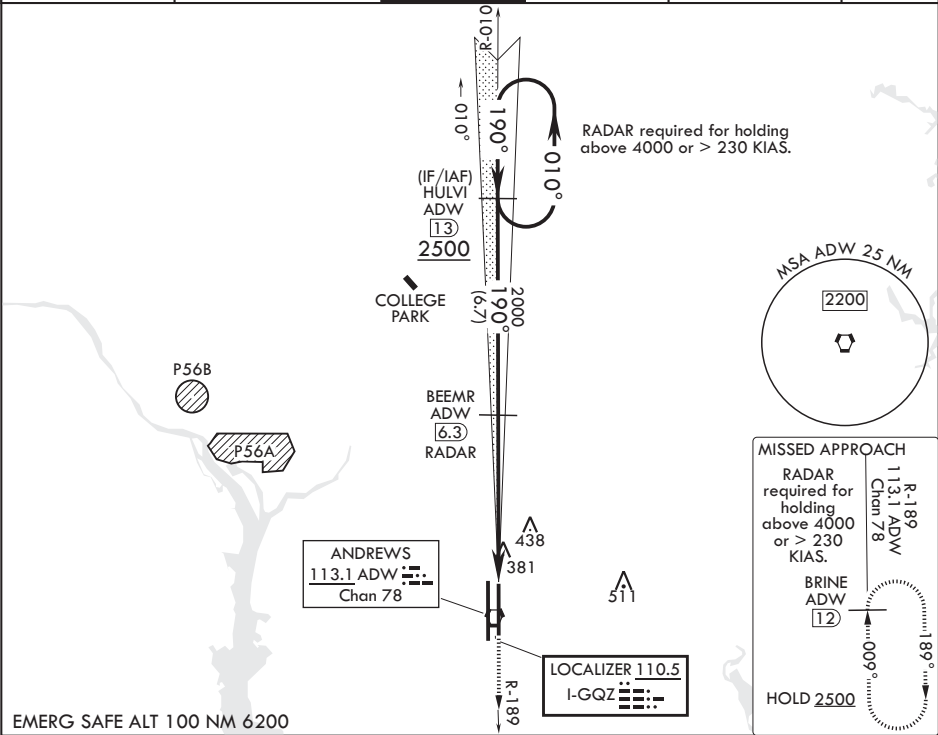
LOC I-GQZ 110.5	APCH CRS 190°	Rwy Idg TDZE Arpt Elev	9756 279 280
--------------------	------------------	------------------------------	--------------------

(USAF) JOINT BASE ANDREWS (ANDREWS AFB) (KADW)

RADAR or DME required at FAF	ALSIF-1 A1
* When ALS inop, increase RVR to 40, vis to 3/4. ** When ALS inop, increase CAT AB RVR to 55, vis to 1 mile; CAT CDE RVR to 60, vis to 1 1/8 mile. *** Circling not authorized W of Rwy 1L-19R.	

MISSED APPROACH: Climb to 2500 via ADW R-189 to BRINE/ADW 12 DME and hold.
--

ATIS 133.675 251.05	POTOMAC APP CON 128.0 335.5	TOWER 118.4 349.0	GND CON 121.8 275.8	CLNC DEL 127.55 285.475	CPDLC
------------------------	--------------------------------	----------------------	------------------------	----------------------------	-------



--	--	--	--	--

CAMP SPRINGS, MARYLAND

Amdt 1 18MAY23

38°49'N - 76°52'W JOINT BASE ANDREWS (ANDREWS AFB) (KADW)

ILS or LOC RWY 19L

NE-3, 07 AUG 2025 to 04 SEP 2025

NE-3, 07 AUG 2025 to 04 SEP 2025