

ILS RWY 1L (CAT II & III)

LOC I-RWS <b><u>111.5</u></b>	APCH CRS <b>010°</b>	Rwy Idg <b>10,310</b> TDZE <b>261</b> Arpt Elev <b>280</b>
----------------------------------	-------------------------	--

[USAF] JOINT BASE ANDREWS (ANDREWS AFB) (KADW)

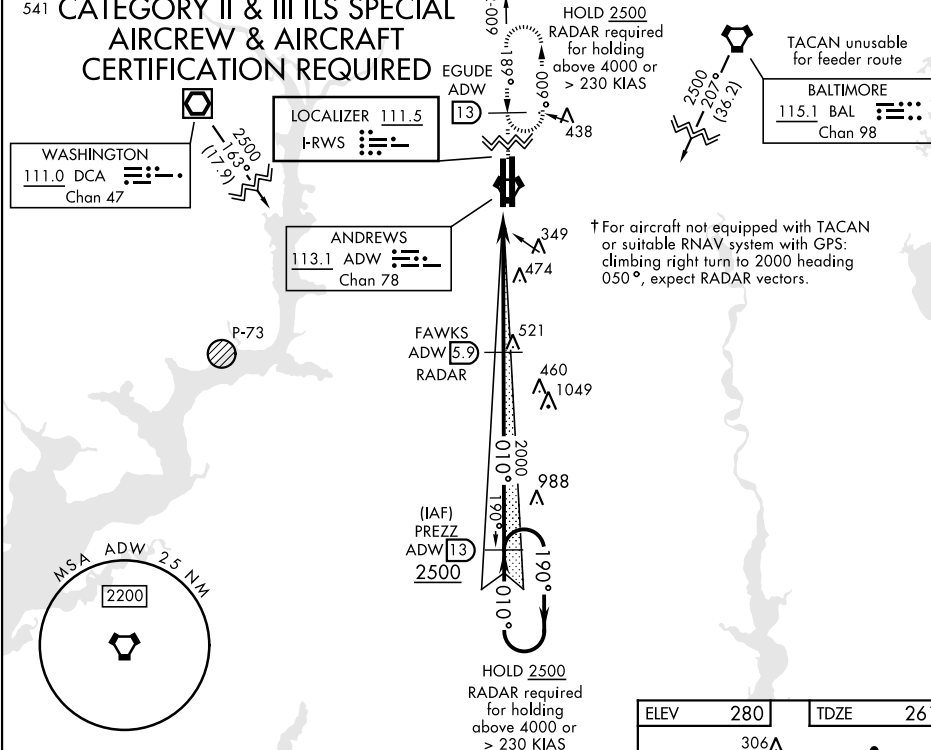
RADAR or DME required
-----------------------



† MISSED APPROACH: Climbing to 2500, intercept  
ADW VORTAC R-009 to EGUDE and hold.

ATIS	POTOMAC APP CON	TOWER	GND CON	CLNC DEL	CPDLC
133.675 251.05	128.0 335.5	118.4 349.0	121.8 275.8	127.55 285.475	

541 CATEGORY II & III ILS SPECIAL  
AIRCREW & AIRCRAFT  
CERTIFICATION REQUIRED E



EMERG SAFE ALT 100 NM 6200

[illegible]

Orig 06OCT22

ILS RWY 1L (CAT II &amp; III)