

WAAS CH 82101 W05A	APP CRS 049°	Rwy Idg TDZE Apt Elev	5580 12 13
--	------------------------	-----------------------------	---------------------------------------

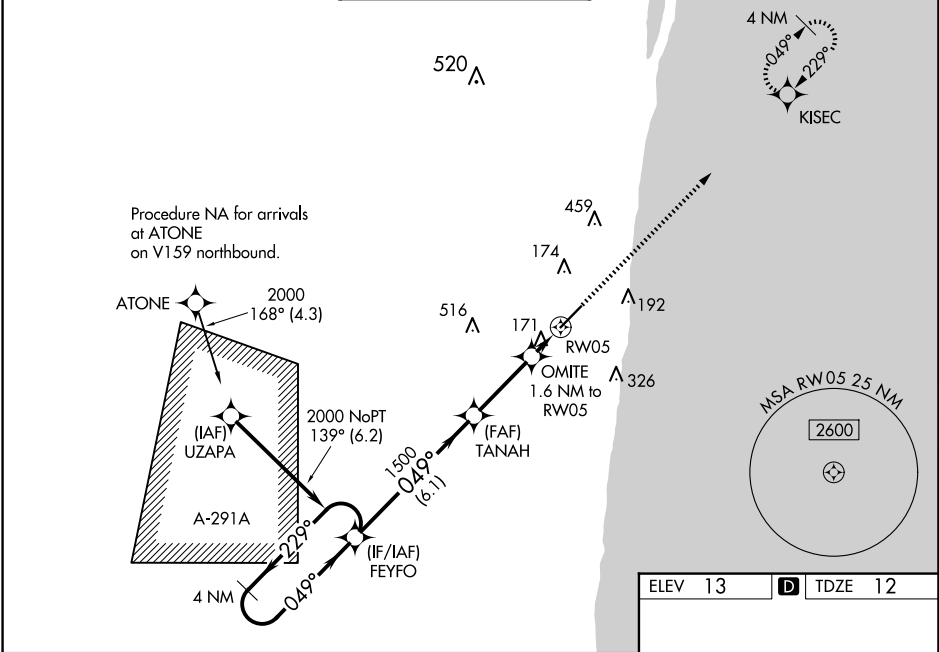
RNAV (GPS) RWY 5
BOCA RATON (BCT)

RNP APCH-GPS.

▼ Baro-VNAV NA when using Palm Beach Intl altimeter setting. For uncompensated Baro-VNAV systems, LNAV/VNAV NA below -15°C or above 54°C. When local altimeter setting not received, use Palm Beach Intl altimeter setting: increase LPV DA to 326 feet; increase LNAV/VNAV DA to 501 feet; increase all MDAs 60 feet and visibility LNAV Cats C and D ¼ SM and Circling Cats C and D ¼ SM. In minimum visibility conditions bright lights on highway ¼ mile north of airport may be mistaken for runway lights. Rwy 5 helicopter visibility reduction below ¾ SM NA.

MISSED APPROACH:
Climb to 2000 direct
KISEC and hold.

AWOS-3 121.125	PALM BEACH APP CON 127.35 343.6	BOCA RATON TOWER★ 118.425 (CTAF) 0	GND CON 121.8	CLNC DEL 121.8	GCO 127.35
--------------------------	---	--	-------------------------	--------------------------	----------------------



4 NM Holding Pattern		VGSI and RNAV glidepath not coincident (VGSI Angle 3.25/TCH 46).		2000	KISEC
2000		FEYFO	TANAH	OMITE	RW05
GP 3.00°		1500	1500	1.6 NM to RW05	
TCH 40		6.1 NM	3 NM	1.6 NM	
CATEGORY	A	B	C	D	
LPV DA	283-7/8		271 (300-7/8)		
LNAV/VNAV DA	458-13/8		446 (500-13/8)		
LNAV MDA	440-1	428 (500-1)	440-11/4	428 (500-11/4)	
CIRCLING	680-1	667 (700-1)	680-13/4	880-23/4	
			667 (700-13/4)	867 (900-23/4)	

