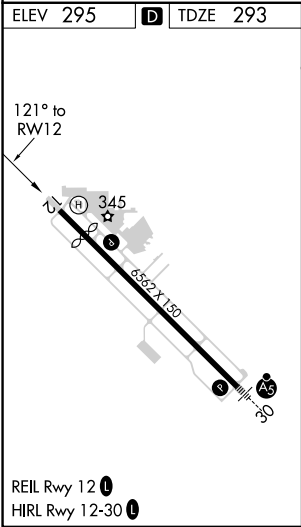
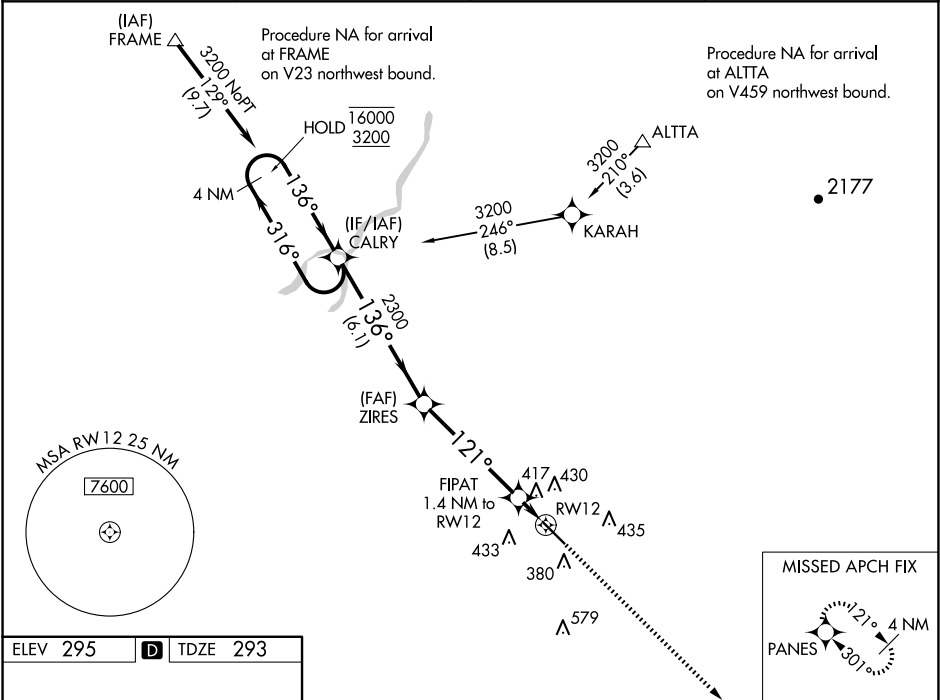


WAAS CH 82423 W12A	APP CRS 121°	Rwy Idg TDZE 293 Apt Elev 295
----------------------------------------	------------------------	---------------------------------------------------

RNAV (GPS) RWY 12

VISALIA MUNI (VIS)

RNP APCH.		MISSED APPROACH: Climb to 2900 direct PANES and hold.	
▼ For uncompensated Baro-VNAV systems, LNAV/VNAV NA below -15°C or above 54°C.			
AWOS-3PT 119.925	FRESNO APP CON 118.5	CLNC DEL 118.5	UNICOM 123.05 (CTAF) 0



VGSI and RNAV glidepath not coincident (VGSI Angle 3.00/TCH 40).					2900	PANES	
4 NM Holding Pattern CALRY					↑	✦	
16000 ← 316° 3200 136° →					ZIRES 2300	FIPAT 1.4 NM to RW12	*LNAV only.
GP 3.00° TCH 50					2300	121°	RW12
					6.1 NM	4.8 NM	1.4 NM
CATEGORY	A		B	C	D		
LPV DA	543-¾ 250 (300-¾)						
LNAV/ VNAV DA	697-1½ 404 (500-1½)						
LNAV MDA	680-1 387 (400-1)			680-1½ 387 (400-1½)			
CIRCLING	720-1 425 (500-1)	760-1 465 (500-1)	760-1½ 465 (500-1½)	940-2 645 (700-2)			