

LOC/DME I-VIS <b>108.5</b> Chan <b>22</b>	APP CRS <b>301°</b>	Rwy Idg <b>5635</b> TDZE <b>295</b> Apt Elev <b>295</b>
---	------------------------	---

# ILS or LOC RWY 30

DME required.

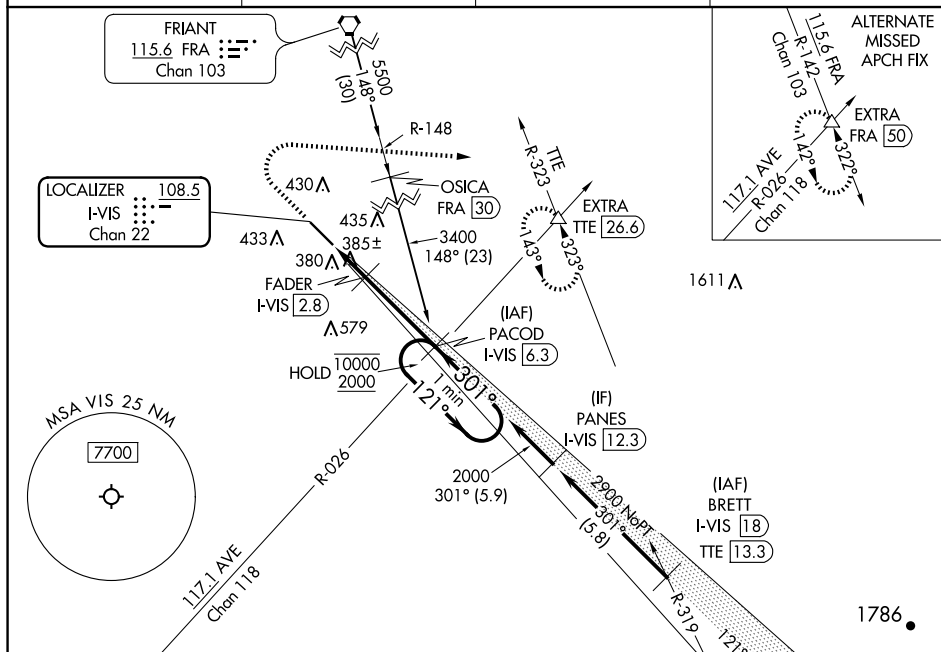
**T**  
**A** NA For inop ALS, increase S-LOC 30  
Cat C/D visibility to 1 SM.

MAISR

A5

**MISSED APPROACH:** Climb to 1000 then climbing right turn to 3500 on heading 080° and on TTE VOR/DME R-323 to EXTRA INT/TTE 26.6 DME and hold, continue climb-in-hold to 3500.

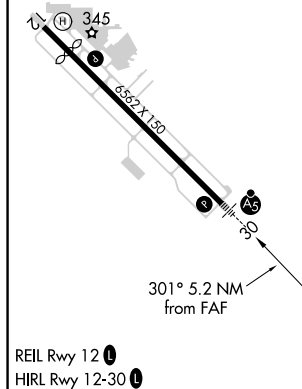
AWOS-3PT <b>119.925</b>	FRESNO APP CON <b>118.5</b>	CLNC DEL <b>118.5</b>	UNICOM <b>123.05 (CTAF) 0</b>
----------------------------	--------------------------------	--------------------------	----------------------------------




ELEV 295	<b>D</b>	TDZE 295
----------	----------	----------

Procedure NA for arrivals at TTE VOR/DME on V165-459 southeast bound.

TULE  
116.25 TTE =  
Chan 109 (Y)



1000 ↑	3500 hdg 080°	TTE R-323	EXTRA △	PACOD I-VIS 6.3	One Minute Holding Pattern

CATEGORY	A	B	C	D
S-ILS 30	502-½ 207 (300-½)			
S-LOC 30	640-½ 345 (400-½)		640-⅝ 345 (400-⅝)	
 CIRCLING	720-1 425 (500-1)	760-1 465 (500-1)	760-1½ 465 (500-1½)	940-2 645 (700-2)