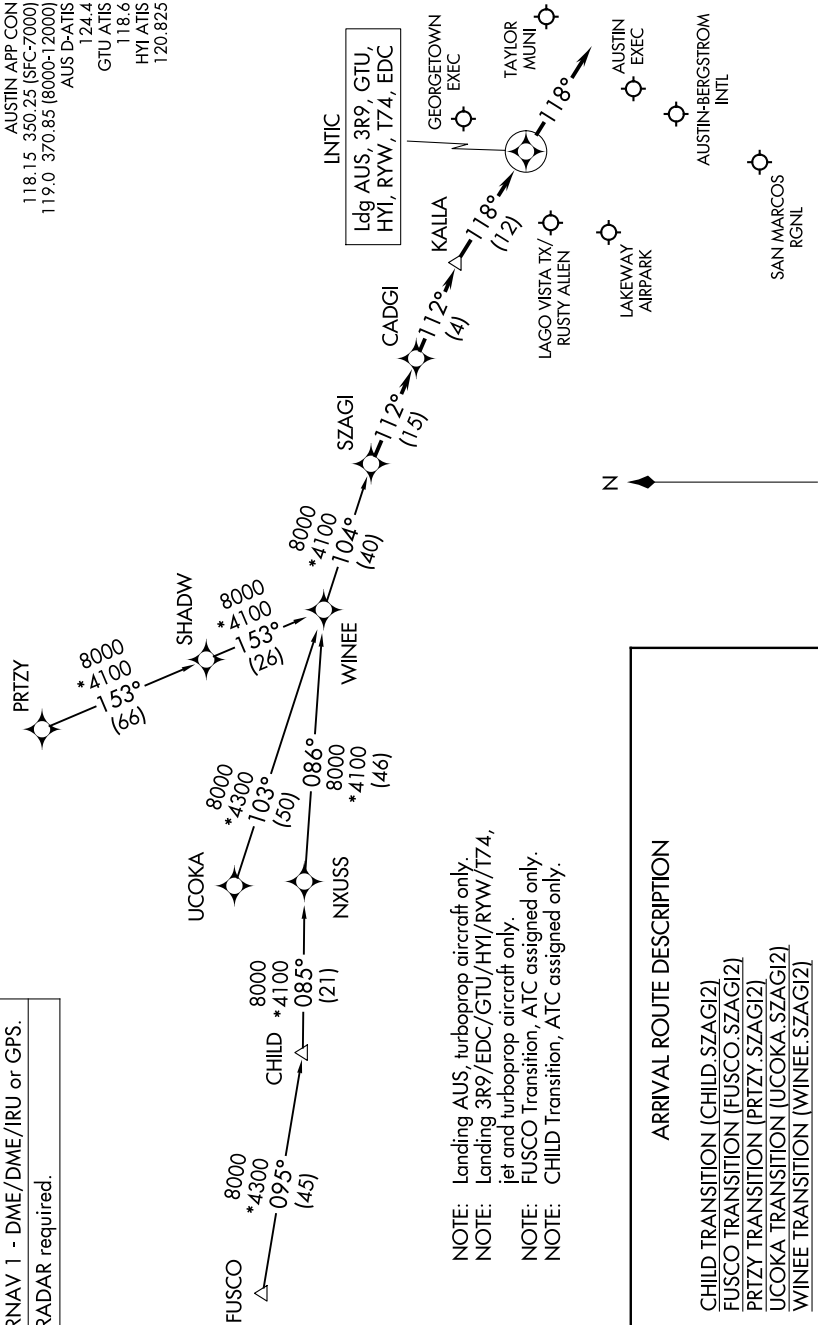


SC-3, 07 AUG 2025 to 04 SEP 2025

RNAV 1 - DME/DME/IRU or GPS.
RADAR required.



ARRIVAL ROUTE DESCRIPTION

CHILD TRANSITION (CHILD.SZAGI2)
FUSCO TRANSITION (FUSCO.SZAGI2)
PRITZY TRANSITION (PRITZY.SZAGI2)
UCOKA TRANSITION (UCOKA.SZAGI2)
WINEE TRANSITION (WINEE.SZAGI2)

LANDING ALL AIRPORTS: From SZAGI on track 112° to CADGI, then on track 112° to KALLA, then on track 118° to LNTIC, then on track 118°. Expect RADAR vectors to final approach course.

NOTE: Chart not to scale.

SC-3, 07 AUG 2025 to 04 SEP 2025