
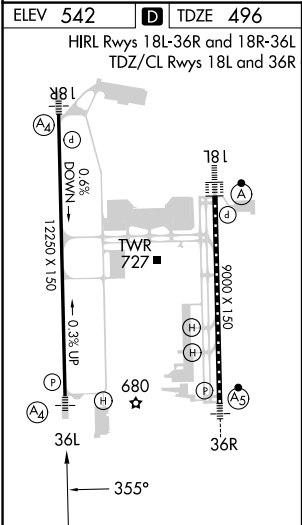
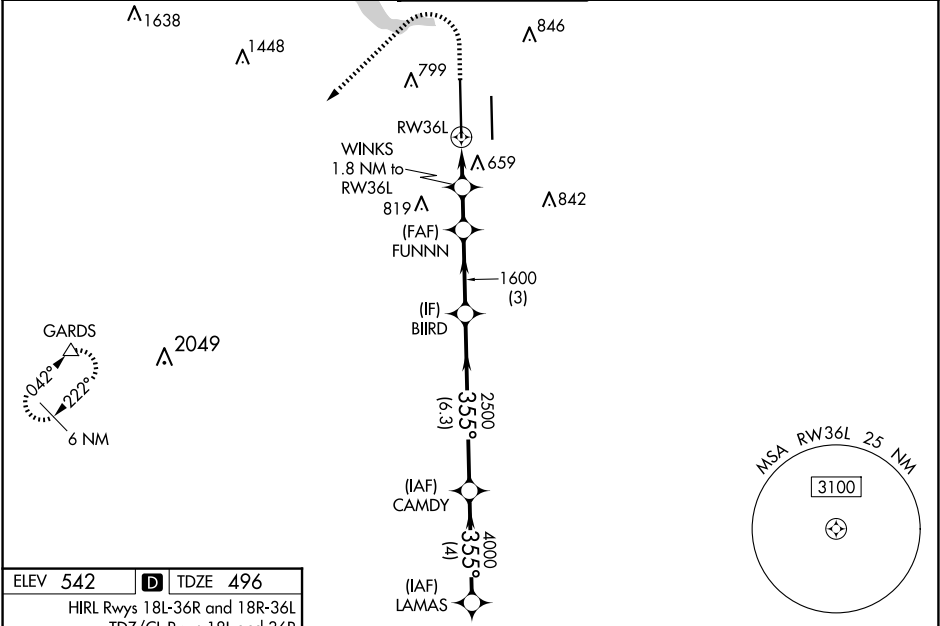


WAAS CH 90229 W36A	APP CRS 355°	Rwy Idg 12250 TDZE 496 Apt Elev 542
----------------------------------------	------------------------	----------------------------------------------------------------

RNAV (GPS) Y RWY 36L

AUSTIN-BERGSTROM INTL (AUS)

RNP APCH-GPS.			MALSP 	MISSED APPROACH: Climb to 1700 then climbing left turn to 3500 direct GARDS and hold.	
T Simultaneous approach authorized. Use of FD or AP required during simultaneous operations. LNAV procedure NA during simultaneous operations. For uncompensated Baro-VNAV systems, LNAV/VNAV NA below -5°C or above 54°C. Inop table does not apply to LPV all Cats. For inop ALS, increase LNAV/VNAV Cat E visibility to 1½ SM, LNAV Cat E visibility to 1¼ SM.					
D-ATIS 124.4	AUSTIN APP CON 127.225 317.65 (EAST) 120.875 270.25 (SOUTH) 119.0 370.85 (WEST)	AUSTIN TOWER 121.0 281.5	GND CON 121.9 348.6	CLNC DEL 125.5 263.0	CPDLC



ELEV 542 D TDZE 496		HIRL Rwy 18L-36R and 18R-36L TDZ/CL Rwy 18L and 36R				
1700		3500	GARDS	VGSI and RNAV glidepath not coincident (VGSI Angle 3.00/TCH 60).		LAMAS
1700		3500	GARDS	FUNNIN		BIIRD
1700		3500	GARDS	WINKS		CAMDY
1700		3500	GARDS	1.8 NM to RW36L		5000
1700		3500	GARDS	1.2 NM to RW36L		4000
1700		3500	GARDS	1100		GP 3.00°
1700		3500	GARDS	1600		TCH 54
1700		3500	GARDS	1.2 NM		0.6
1700		3500	GARDS	1.5 NM		3
1700		3500	GARDS	3 NM		6.3
1700		3500	GARDS	6.3 NM		4
CATEGORY		A	B	C	D	E
LPV DA		696/40 200 (200-¾)				
LNAV/VNAV DA		970/60 474 (500-1¼)				
LNAV MDA		920/40	424 (400-¾)	920/50	424 (400-1)	
CIRCLING		1040-1 498 (500-1)	1120-1 578 (600-1)	1200-1¾ 658 (700-1¾)	1200-2 658 (700-2)	NA