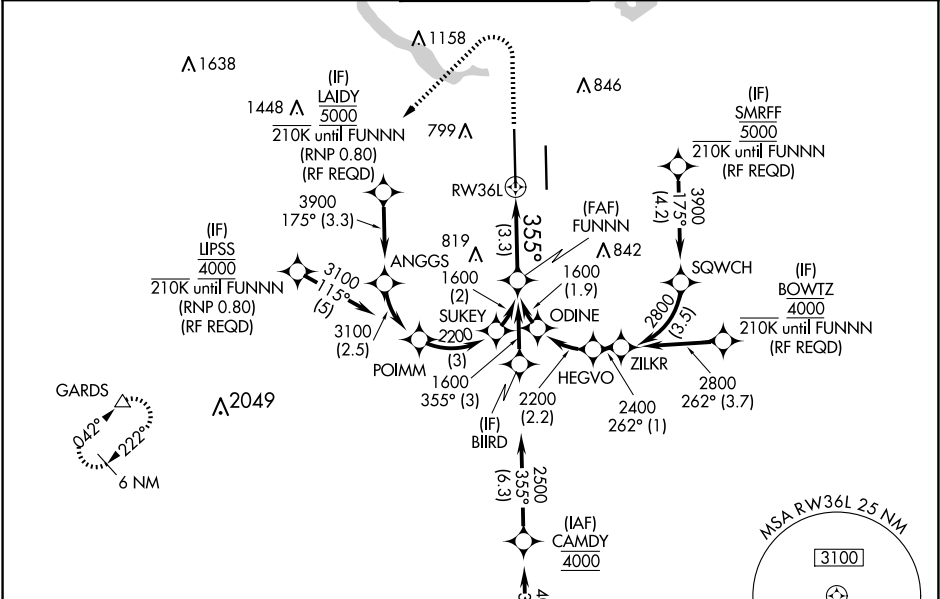


APP CRS	Rwy Idg	12250
355°	TDZE	496
	Apt Elev	542

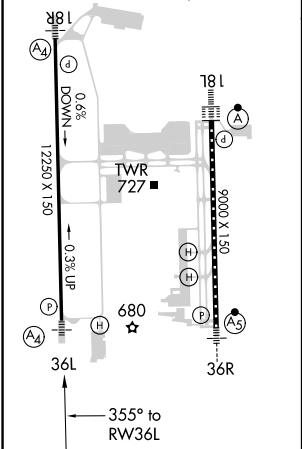
RNAV (RNP) Z RWY 36L
AUSTIN-BERGSTROM INTL (AUS)

RNP AR APCH. RADAR required.	MALS 	MISSED APPROACH: Climb to 1700 then climbing left turn to 3500 direct GARDS and hold.
Simultaneous approach authorized. For uncompensated Baro-VNAV systems, procedure NA below -5°C or above 54°C. For inop ALS, increase RNP 0.11 all Cats visibility to RVR 4500 and RNP 0.30 all Cats visibility to RVR 5500.		

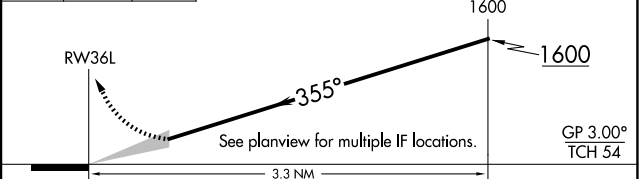
D-ATIS 124.4	AUSTIN APP CON 127.225 317.65 (EAST) 120.875 270.25 (SOUTH) 119.0 370.85 (WEST)	AUSTIN TOWER 121.0 281.5	GND CON 121.9 348.6	CLNC DEL 125.5 263.0	CPDLC
-----------------	--	-----------------------------	------------------------	-------------------------	-------



ELEV 542	D	TDZE 496
HIRL Rwy 18L-36R and 18R-36L TDZ/CL Rwys 18L and 36R		



1700	3500	GARDS	VGSI and RNAV glidepath not coincident (VGSI Angle 3.00/TCH 60).



CATEGORY	A	B	C	D
RNP 0.11 DA	758/40 262 (300-¾)			
RNP 0.30 DA	858/40 362 (400-¾)			

AUTHORIZATION REQUIRED