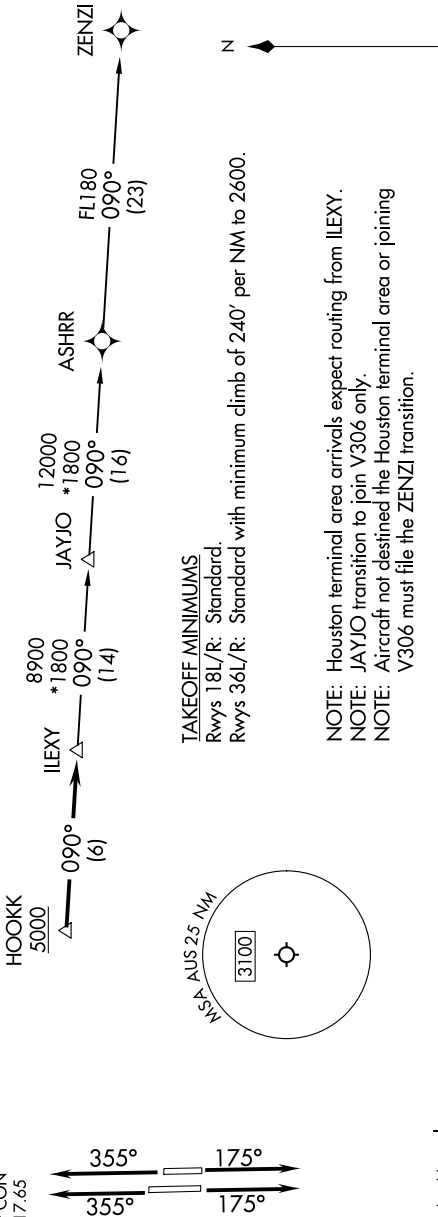


D-ATIS
124.4
CINC DEL
125.5 263.0
CPDIC
GND CON
121.9 348.6
AUSTIN TOWER
121.0 281.5
AUSTIN DEP CON
127.225 317.65

ILEXY FOUR DEPARTURE (RNAV)
(ILEXY4.ILEXY) 15JUN23

RNAV 1 - DME/DME/IRU or GPS.
RADAR required.

**TOP ALTITUDE:
ASSIGNED BY ATC**



NOTE: Chart not to scale.

DEPARTURE ROUTE DESCRIPTION

TAKEOFF RUNWAYS 18L/R: Climb on heading 175° or as assigned by ATC for vectors to cross HOOKK at or above 5000, thence, . . .
TAKEOFF RUNWAYS 36L/R: Climb on heading 355° or as assigned by ATC for vectors to cross HOOKK at or above 5000, thence, . . .
. . . on track 090° then on transition. Maintain altitude assigned by ATC. Expect filed altitude 10 minutes after departure.

JAYJO TRANSITION (ILEXY4.JAYJO)
ZENZI TRANSITION (ILEXY4.ZENZI)