

LOC/DME I-BSM 110.95 Chan 46 (Y)	APP CRS 355°	Rwy Idg 12250 TDZE 496 Apt Elev 542
--	------------------------	--

ILS or LOC RWY 36L
AUSTIN-BERGSTROM INTL (AUS)

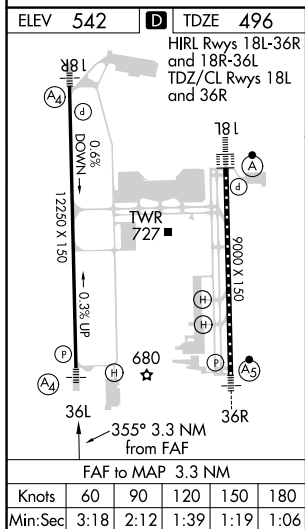
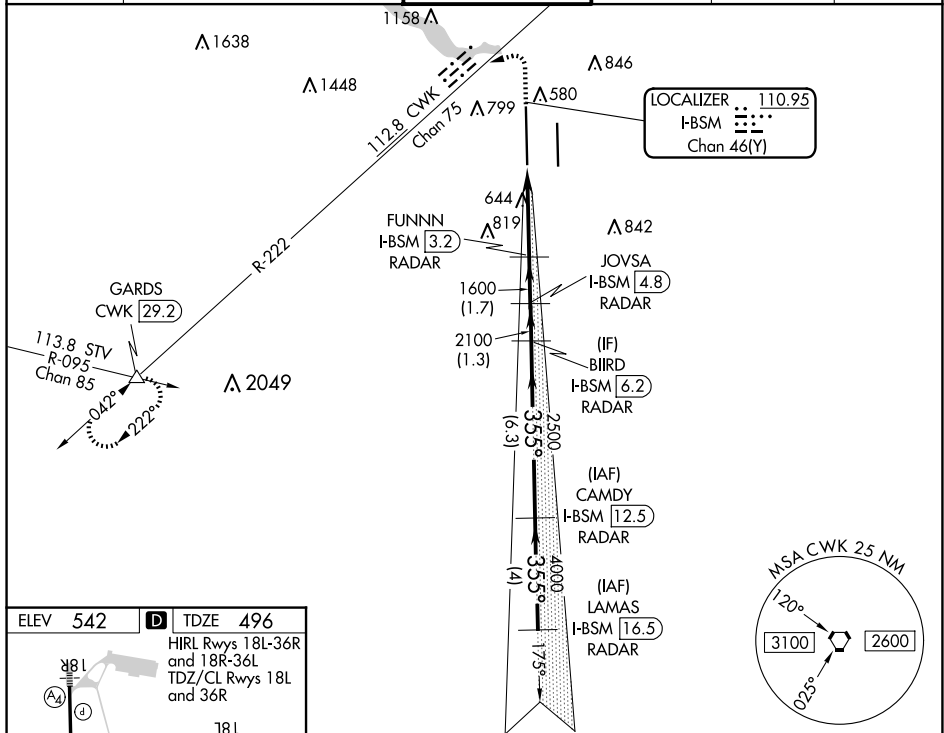
DME or RADAR required.

T Simultaneous approach authorized. For inop ALS, increase S-LOC 36L Cats C/D/E visibility to RVR 6000. Inop table does not apply to S-ILS 36L all Cats.

MALS

MISSED APPROACH: Climb to 1000 then climbing left turn to 3500 on heading 250° and CWK VORTAC R-222 to GARDS INT/CWK 29.2 DME and hold.

D-ATIS	AUSTIN APP CON	AUSTIN TOWER	GND CON	CLNC DEL	CPDLC
124.4	127.225 317.65 120.875 270.25 (SOUTH) 119.0 370.85 (WEST)	121.0 281.5	121.9 348.6	125.5 263.0	



1000 ↑ hdg 250°	CWK R-222	GARDS △	VGSI and ILS glidepath not coincident (VGSI Angle 3.00/TCH 60).				LAMAS I-BSM 16.5 RADAR
I-BSM DME ANTENNA	FUNNN I-BSM 3.2 RADAR	JOVSA I-BSM 4.8 RADAR	BIIRD I-BSM 6.2 RADAR	CAMDY I-BSM 12.5 RADAR	5000 355°		
I-BSM 0.2	I-BSM 0.9	1600	2100	2500	4000	GS 3.00° TCH 54	
1.1 NM	2.2 NM	1.7 NM	1.3 NM	6.3 NM	4 NM		
CATEGORY	A	B	C	D	E		
S-ILS 36L	696/40 200 (200-¾)						
S-LOC 36L	900/40	404 (400-¾)	900/50 404 (400-1)				