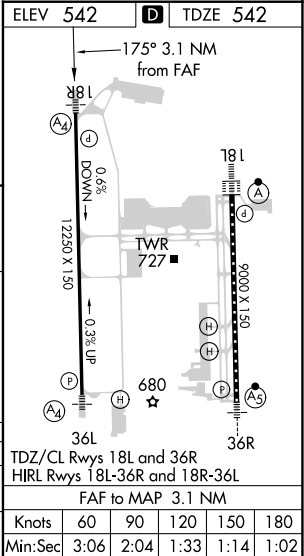
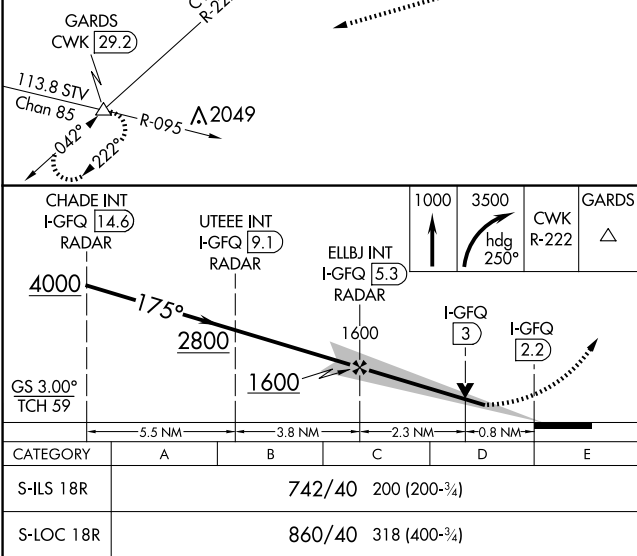
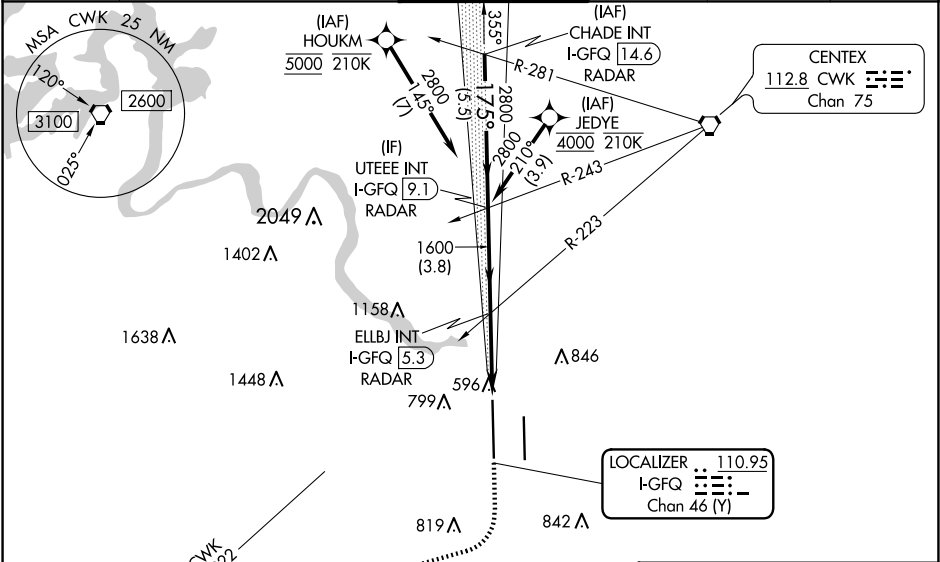


LOC/DME I-GFQ	APP CRS	Rwy Idg	12250
110.95	175°	TDZE	542
Chan 46(Y)		Apt Elev	542

ILS or LOC RWY 18R
AUSTIN-BERGSTROM INTL (AUS)

RNAV 1-GPS or RADAR required for procedure entry. From HOUKM, JEDYE: RNAV 1-GPS required.	MALS	MISSED APPROACH: Climb to 1000 then climbing right turn to 3500 on heading 250° and CWK VORTAC R-222 to GARDS INT/CWK 29.2 DME and hold.
Simultaneous approach authorized. Inop table does not apply to S-ILS 18R. For inop ALS, increase S-LOC-18R Cats C, D and E visibility to RVR 4500.	A4	

D-ATIS	AUSTIN APP CON	AUSTIN TOWER	GND CON	CLNC DEL	CPDLC
124.4	127.225 317.65 (EAST) 120.875 270.25 (SOUTH) 119.0 370.85 (WEST)	121.0 281.5	121.9 348.6	125.5 263.0	



SC-3, 07 AUG 2025 to 04 SEP 2025

SC-3, 07 AUG 2025 to 04 SEP 2025