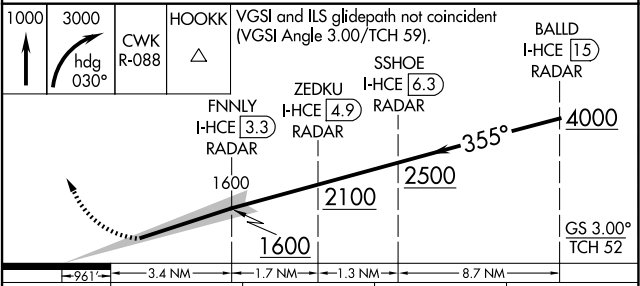
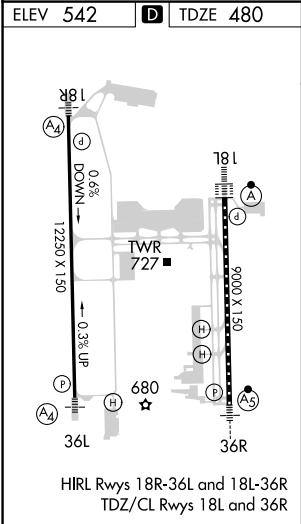
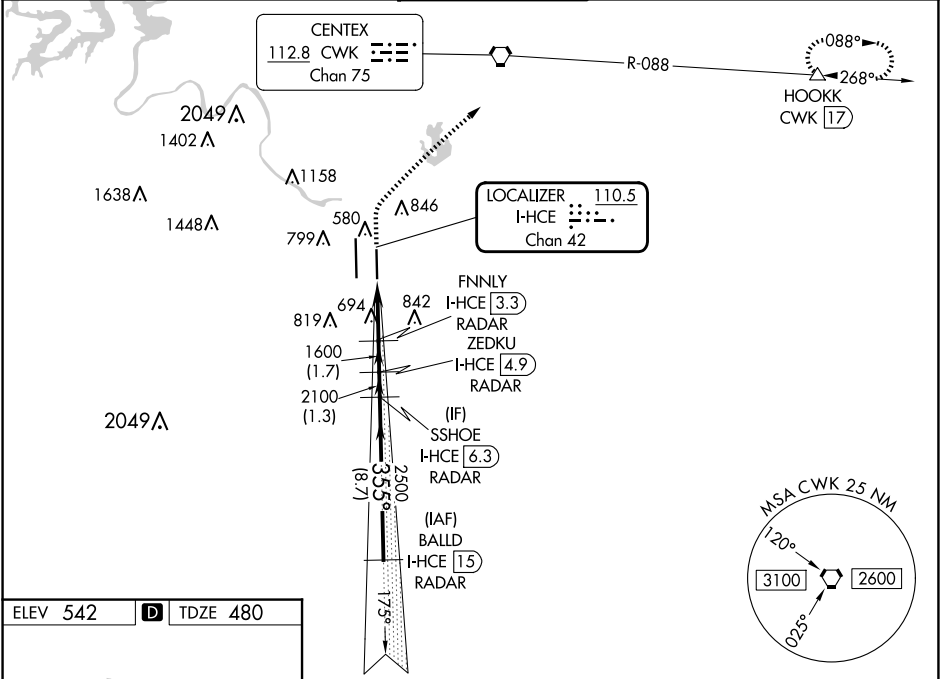


LOC/DME I-HCE	APP CRS	Rwy Idg	9000
110.5	355°	TDZE	480
Chan 42		Apt Elev	542

ILS RWY 36R (SA CAT I & II)
AUSTIN-BERGSTROM INTL (AUS)

DME required. RADAR required for procedure entry.	MALSR	MISSED APPROACH: Climb to 1000 then climbing right turn to 3000 on heading 030° and CWK VORTAC R-088 to HOOKK/CWK 17 DME and hold.
Simultaneous approach authorized. SA CAT I: Requires specific OPSPEC, MSPEC or LOA approval. SA CAT II: Requires specific OPSPEC, MSPEC or LOA approval.		

D-ATIS	AUSTIN APP CON	AUSTIN TOWER	GND CON	CLNC DEL	CPDLC
124.4	127.225 317.65 (EAST) 120.875 270.25 (SOUTH) 119.0 370.85 (WEST)	121.0 281.5	121.9 348.6	125.5 263.0	



CATEGORY	A	B	C	D
S-ILS 36R	SA CAT I	RA 185/14	150 DA 630	
S-ILS 36R	SA CAT II	RA 110/12	100 DA 580	

SA CATEGORY I & II ILS - SPECIAL AIRCREW
& AIRCRAFT CERTIFICATION REQUIRED