

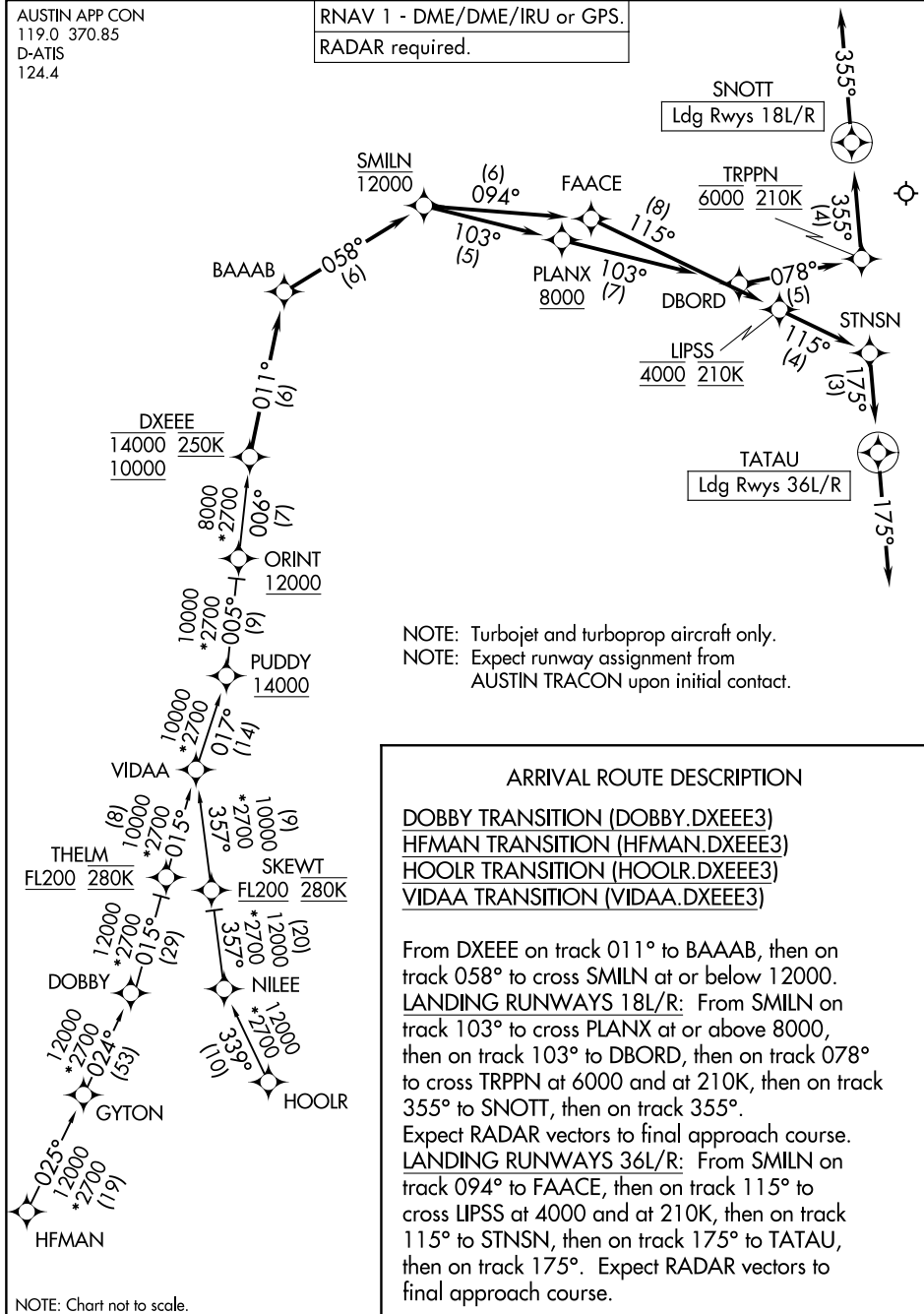
AUSTIN-BERGSTROM INTL (AUS)  
AUSTIN, TEXAS

DXEEE THREE ARRIVAL (RNAV)

AUSTIN APP CON  
119.0 370.85  
D-ATIS  
124.4

RNAV 1 - DME/DME/IRU or GPS.

RADAR required.



NOTE: Turbojet and turboprop aircraft only.  
NOTE: Expect runway assignment from  
AUSTIN TRACON upon initial contact.

## ARRIVAL ROUTE DESCRIPTION

DOBBY TRANSITION (DOBBY.DXEEE3)  
HFMAN TRANSITION (HFMAN.DXEEE3)  
HOOLR TRANSITION (HOOLR.DXEEE3)  
VIDAA TRANSITION (VIDAA.DXEEE3)

From DXEE on track 011° to BAAAB, then on track 058° to cross SMILN at or below 12000. LANDING RUNWAYS 18L/R: From SMILN on track 103° to cross PLANX at or above 8000, then on track 103° to DBORD, then on track 078° to cross TRPPN at 6000 and at 210K, then on track 355° to SNOTT, then on track 355°. Expect RADAR vectors to final approach course. LANDING RUNWAYS 36L/R: From SMILN on track 094° to FAACE, then on track 115° to cross LIPSS at 4000 and at 210K, then on track 115° to STNSN, then on track 175° to TATAU, then on track 175°. Expect RADAR vectors to final approach course.

NOTE: Chart not to scale.

DXEEE THREE ARRIVAL (RNAV)

(DXEEE.DXEEE3) 14JUL22

AUSTIN, TEXAS  
AUSTIN-BERGSTROM INTL (AUS)

SC-3, 07 AUG 2025 to 04 SEP 2025