

ABERDEEN, MARYLAND

WAAS CH 70342 W22A	APCH CRS 218°	Rwy ldg TDZE Arpt Elev	7998 45 45
--------------------------	------------------	------------------------------	------------------

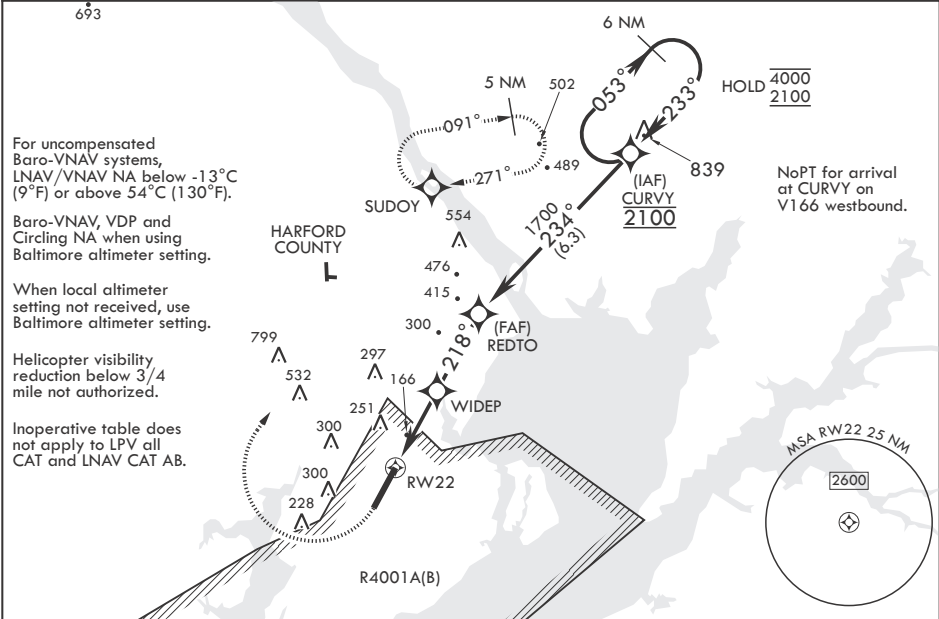
-(USA)

PHILLIPS AAF (ABERDEEN PROVING GROUND) (KAPG)

# RNAV (GPS) RWY 22

RNP APCH-GPS V**Circling NA SE of RWY 4-22. A	MISSED APPROACH: Climb to 500, then climbing right turn to 2000 direct SUDOY and hold.
---	--

POTOMAC APP CON/DEP CON 125.525 291.625	ADVSY* 126.15 (CTAF) 0
--	---------------------------



500	2000	SUDOY	VGSI and RNAV glidepath not coincident (VGSI Angle 3.00/TCH 49).	CURVY	6 NM Holding Pattern	ELEV 45	TDZE 45
503°	233°	4000	2100	2100			
RW22	1.2 NM to RW22	WIDEP	218°	234°	1700	GP 3.00° TCH 59	
2.5 NM	2.5 NM						
CATEGORY	A	B	C	D			
LPV DA	295-1	250	(300-1)				
LNAV/VNAV DA	560-1 $\frac{3}{8}$	515	(600-1 $\frac{3}{8}$ )				
LNAV MDA	560-1 515 (600-1)	560-1 $\frac{3}{8}$ 515 (600-1 $\frac{3}{8}$ )					
CIRCLING**	560-1 515 (600-1)	640-1 595 (600-1)	680-1 $\frac{3}{4}$ 635 (700-1 $\frac{3}{4}$ )	880-2 $\frac{3}{4}$ 835 (900-2 $\frac{3}{4}$ )			
BALTIMORE WASHINGTON INTL ALTIMETER SETTING MINIMUMS							
LPV DA	376-1 $\frac{1}{4}$	281	(300-1 $\frac{1}{4}$ )				
LNAV/VNAV DA	657-1 $\frac{3}{4}$	612	(600-1 $\frac{3}{4}$ )				
LNAV MDA	660-1 $\frac{1}{4}$ 515 (700-1 $\frac{1}{4}$ )	660-1 $\frac{3}{4}$ 515 (700-1 $\frac{3}{4}$ )					
CIRCLING**	660-1 615 (700-1 $\frac{1}{4}$ )	740-1 $\frac{1}{4}$ 695 (700-1 $\frac{1}{4}$ )	780-2 735 (800-2)	961-3 916 (1000-3)			

ABERDEEN, MARYLAND 39°28'N - 76°10'W PHILLIPS AAF (ABERDEEN PROVING GROUND) (KAPG)

Amtdt 3 15JUN23

RNAV (GPS) RWY 22

7998 x 200

TWR 147

218°

HIRL all Rwy's 0

REIL Rwy 22 0

NE-3, 07 AUG 2025 to 04 SEP 2025

NE-3, 07 AUG 2025 to 04 SEP 2025