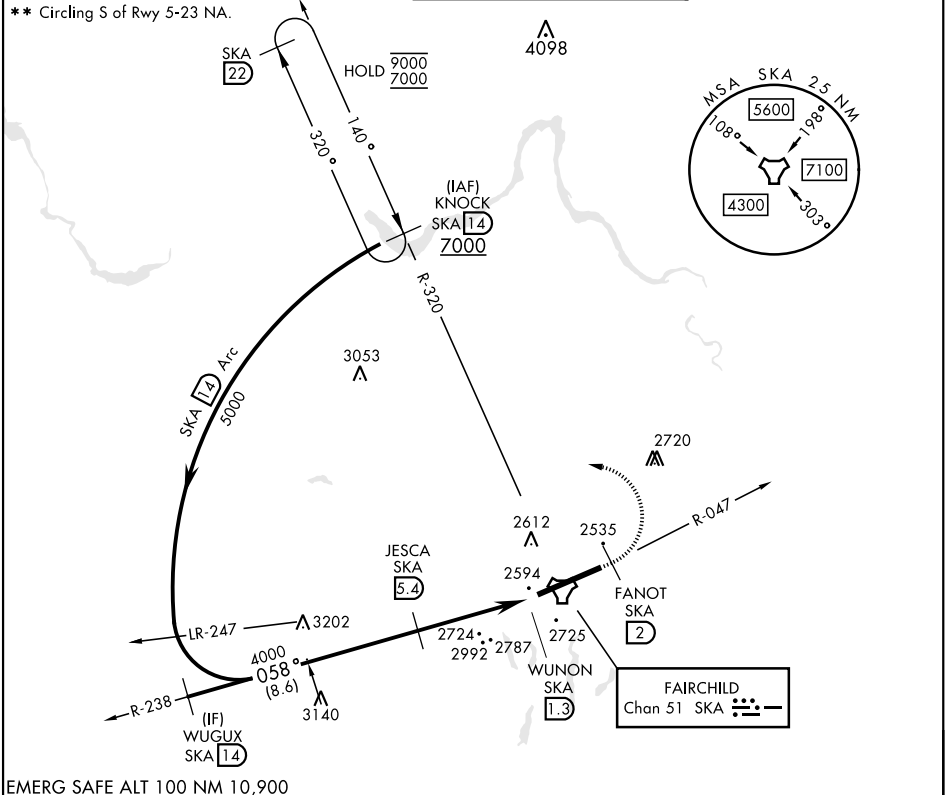


SPOKANE, WASHINGTON

TACAN RWY 5

TACAN Chan 51	APCH CRS 058°	Rwy Idg 13,899 TDZE 2462 Arprt Elev 2462	[USAF]	FAIRCHILD AFB (KSKA)
RADAR required for KNOCK holding.			ALSf-2	MISSED APPROACH: Climb to 7000 via SKA TACAN R-047. At FANOT turn left hdg 275° to intcp SKA R-320 to KNOCK and hold, cont climb in hold to 7000.
* When ALS inop, increase CAT A RVR to 55, vis to 1 mile, CAT B vis to 1½ miles, CAT CDE vis to 2½ miles.				
ATIS 257.625	SPOKANE APP CON 123.75 282.25 133.35 263.0	(208° - 028°) (029° - 207°)	TOWER 120.35 233.7	GND CON 123.6 275.8



EMERG SAFE ALT 100 NM 10,900

		7000 SKA R-047	FANOT SKA 2	hdg 275°	ELEV 2462	TDZE 2462
		4.1 NM	0.5			
CATEGORY	A	B	C	D	E	
S-5 *	3260/24 798 (800-½)	3260/40 798 (800-¾)	3260-1¼ 798 (800-1¼)	798	(800-1¼)	
CIRCLING **	3260-1 798 (800-1)	3260-1¼ 798 (800-1¼)	3260-2½ 798 (800-2½)		3600-3 1138(1200-3)	HIRL Rwy 5-23 TDZL/CL Rwy 5

SPOKANE, WASHINGTON

47°37'N-117°39'W

FAIRCHILD AFB (KSKA)

Amtd 5 03NOV22

TACAN RWY 5

NW-1, 07 AUG 2025 to 04 SEP 2025

NW-1, 07 AUG 2025 to 04 SEP 2025