
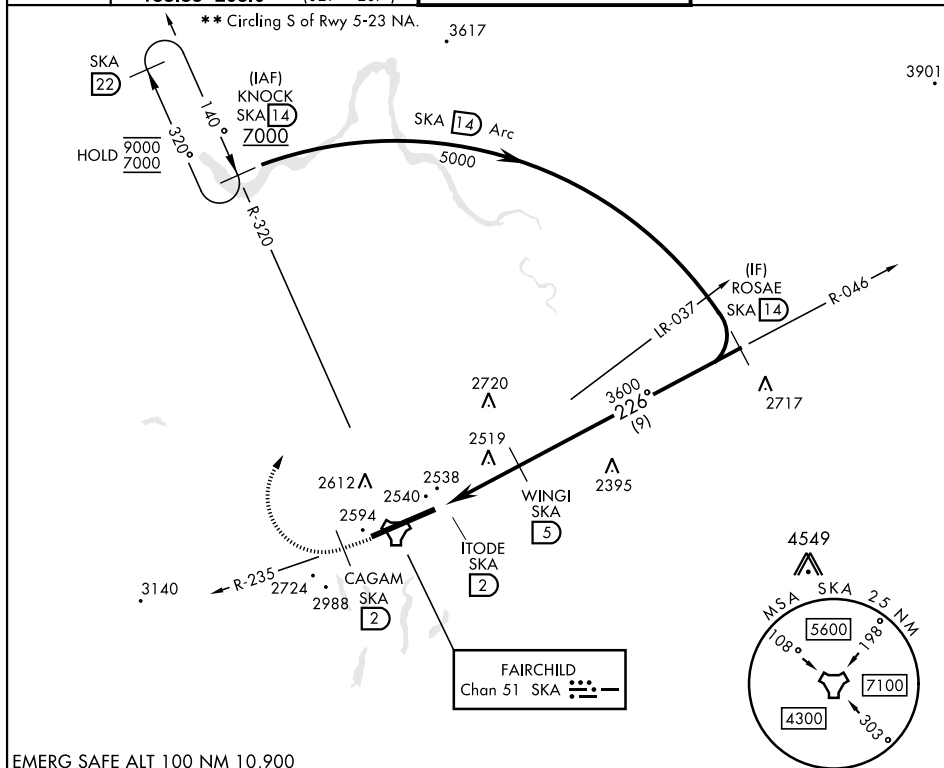


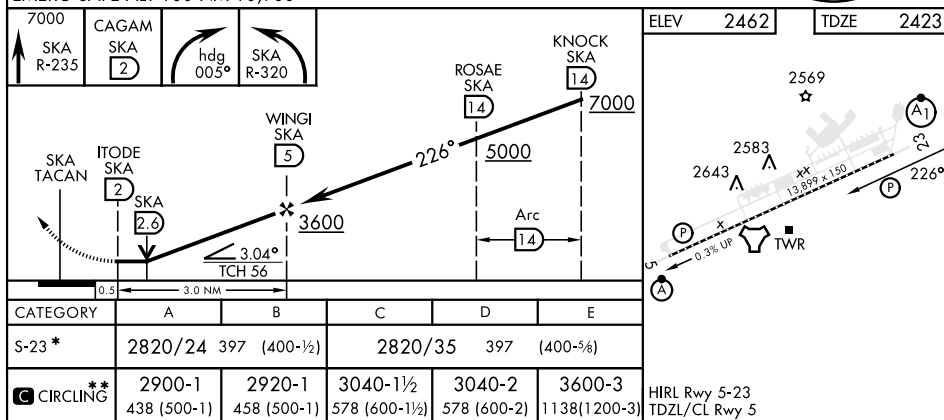
SPOKANE, WASHINGTON

TACAN RWY 23

TACAN SKA Chan 51	APCH CRS 226°	Rwy Idg 13,899 TDZE 2423 Arpt Elev 2462	[USAF]	FAIRCHILD AFB (KSKA)	
RADAR required for KNOCK holding. ▼ * When ALS inop, increase CAT AB RVR to 55 and vis to 1 mile, CAT CDE RVR to 60, vis to 1½ miles.			ALSF-1 	MISSED APPROACH: Climb to 7000 via SKA TACAN R-235. At CAGAM, turn right hdg 005° to intercept SKA R-320 to KNOCK and hold, cont climb in hold to 7000.	
ATIS 257.625	SPOKANE APP CON 123.75 282.25 (208° - 028°) 133.35 263.0 (029° - 207°)		TOWER 120.35 233.7	GND CON 123.6 275.8	



EMERG SAFE ALT 100 NM 10,900



SPOKANE, WASHINGTON

47°37'N-117°39'W

FAIRCHILD AFB (KSKA)

Amdt 4 03NOV22

TACAN RWY 23

NW-1, 07 AUG 2025 to 04 SEP 2025

NW-1, 07 AUG 2025 to 04 SEP 2025