

SPOKANE, WASHINGTON

ILS or LOC RWY 23

LOC I-SKA
110.3

APCH CRS
231°

Rwy Idg **13,899**
TDZE **2423**
Arpt Elev **2462**

[USAF]

FAIRCHILD AFB (KSKA)

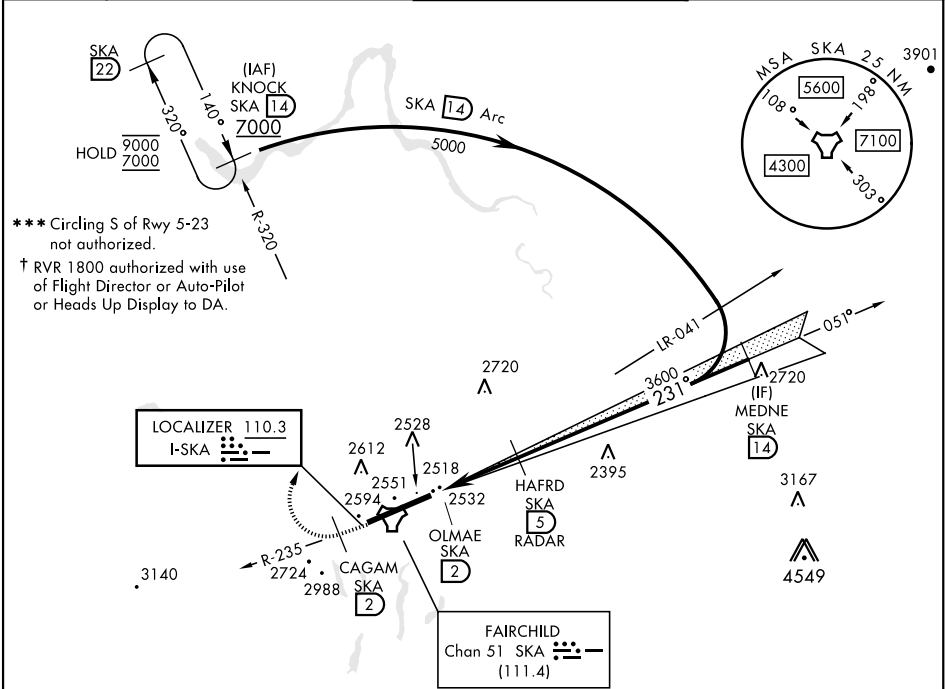
DME or RADAR rqr'd for LOC. RADAR rqr'd for KNOCK holding.

▼* When ALS inop, increase RVR to 40 and vis to ¾ mile.
** When ALS inop, increase RVR to 55 and vis to 1 mile.

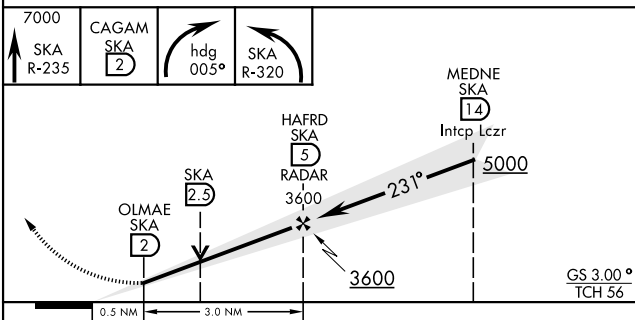
ALS F-1

MISSED APPROACH: Climb to 7000 via SKA R-235.
At CAGAM, turn right heading 005° to intcp SKA R-320 to KNOCK and hold, cont climb in hold to 7000.

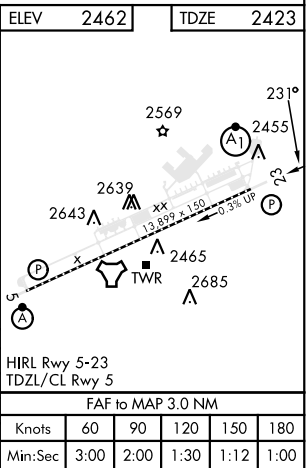
ATIS	SPOKANE APP CON	TOWER	GND CON
257.625	123.75 282.25 (208° - 028°) 133.35 263.0 (029° - 207°)	120.35 233.7	123.6 275.8



EMERG SAFE ALT 100 NM 10,900



CATEGORY	A	B	C	D	E
S-ILS 23*†	2623/24	200	(200-½)		
S-LOC 23**	2800/24	377 (400-½)	2800/35	377	(400-¾)
*** CIRCLING	2900-1 438 (500-1)	2920-1 458 (500-1)	3040-1½ 578 (600-1½)	3040-2 578 (600-2)	3600-3 1138 (1200-3)



SPOKANE, WASHINGTON 47°37'N-117°39'W FAIRCHILD AFB (KSKA)

Amtd 4 03NOV22

ILS or LOC RWY 23

NW-1, 07 AUG 2025 to 04 SEP 2025

NW-1, 07 AUG 2025 to 04 SEP 2025