

SPOKANE, WASHINGTON

ILS RWY 5 (CAT II)

| | | |
|----------------------------------|-------------------------|--|
| LOC I-FRC <u>110.3</u> | APCH CRS 051° | Rwy Idg 13,899 TDZE 2462 Arpt Elev 2462 |
|----------------------------------|-------------------------|--|

[USAF]

FAIRCHILD AFB (KSKA)

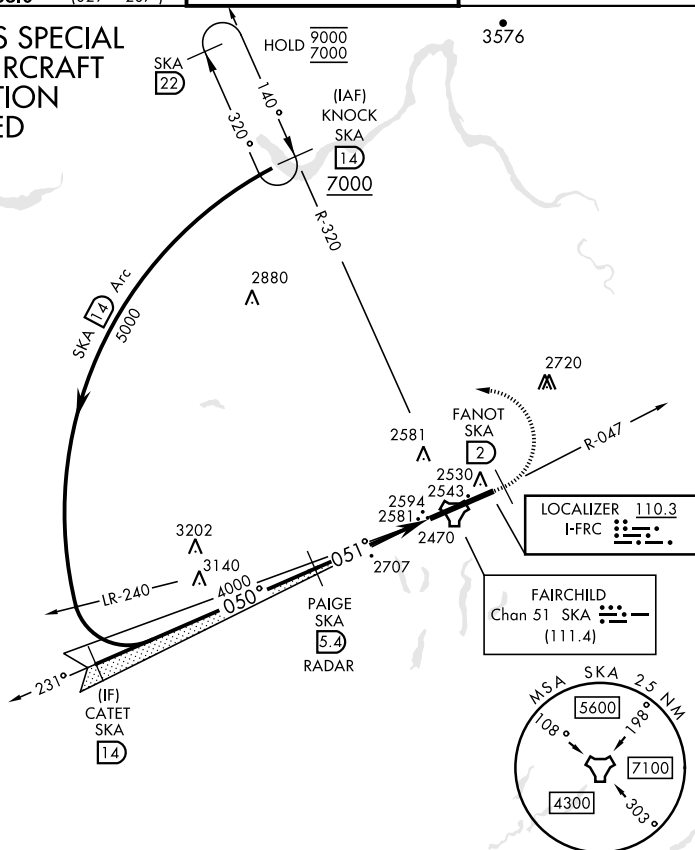
RADAR required for KNOCK holding.

ALSF-2

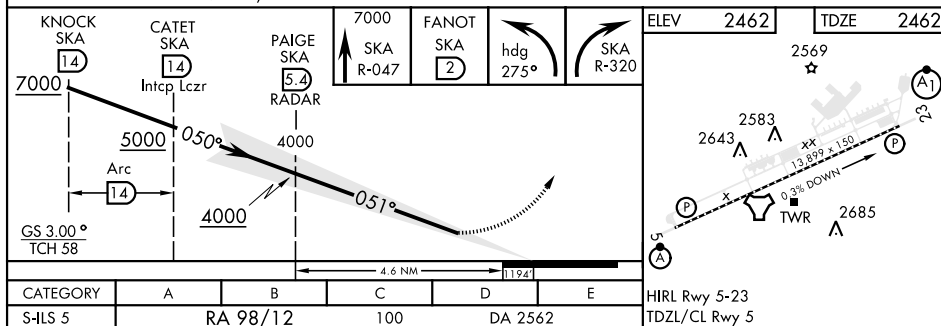
MISSED APPROACH: Climb to 7000 via SKA TACAN R-047. At FANOT turn left hdg 275° to intcp SKA R-320 to KNOCK and hold, continue climb in hold to 7000.

| | | | | | | |
|---------|-----------------|----------------------|--------|-------|---------|-------|
| ATIS | SPOKANE APP CON | | TOWER | | GND CON | |
| 257.625 | 123.75 | 282.25 (208° - 028°) | 120.35 | 233.7 | 123.6 | 275.8 |
| | 133.35 | 263.0 (029° - 207°) | | | | |

CATEGORY II ILS SPECIAL
AIRCREW & AIRCRAFT
CERTIFICATION
REQUIRED



EMERG SAFE ALT 100 NM 10,900



SPOKANE, WASHINGTON

47°37'N-117°39'W

FAIRCHILD AFB (KSKA)

Amdt 2 03NOV22

ILS RWY 5 (CAT II)

NW-1, 07 AUG 2025 to 04 SEP 2025

NW-1, 07 AUG 2025 to 04 SEP 2025