

## WLKKR FIVE DEPARTURE (RNAV)

VAN NUYS (VNY)  
VAN NUYS, CALIFORNIA

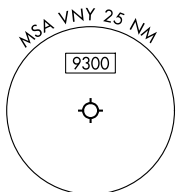
△ COREZ

RNAV 1 - DME/DME/IRU or GPS.  
RADAR required.

**TOP ALTITUDE:**  
**FL230**

## TAKEOFF MINIMUMS

Rwy 16R: Standard with minimum climb of 500'/NM to 1302 then minimum climb of 420'/NM to 2600.



NOTE: Maintain at or below 250K unless otherwise directed by ATC.

NOTE: Turbojet only.

NOTE: Cross DER/VNY VOR/DME 1.5 DME south at or below 1750.

NOTE: OROSZ Transition for Bakersfield area arrivals only.

NOTE: Chart not to scale.

## DEPARTURE ROUTE DESCRIPTION

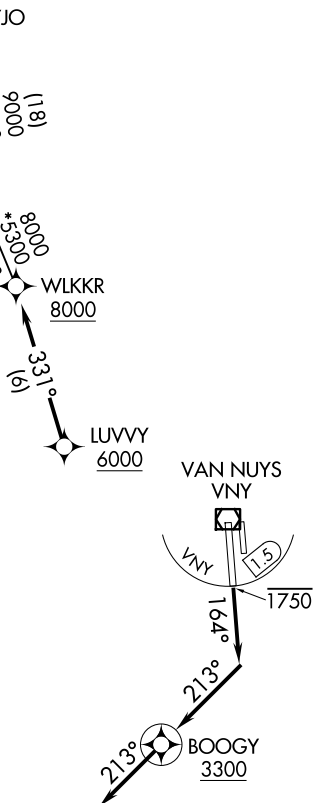
**TAKEOFF RUNWAY 16R:** Climb on heading 164° to intercept course 213° to cross BOOGY at or above 3300, then on track 213° or as assigned by ATC for vectors to cross LUVVY at or above 6000, then on track 331° to cross WLKKR at or above 8000 then on transition. Maintain FL230. Expect filed altitude 10 minutes after departure.

ALL AIRCRAFT: ATC climb gradient: if unable to accept climb rate advise ATC prior to taxi. Rwy 16R: ATC climb rate of 600'/NM to 3000.

COREZ TRANSITION (WLKKR5.COREZ)

CSTRO TRANSITION (WLKKR5.CSTRO)

OROSZ TRANSITION (WLKKR5. OROSZ)



## WLKKR FIVE DEPARTURE (RNAV)

(WLKKR5.WLKKR) 20FEB25

VAN NUYS, CALIFORNIA  
VAN NUYS (VNY)

SW-3, 07 AUG 2025 to 04 SEP 2025