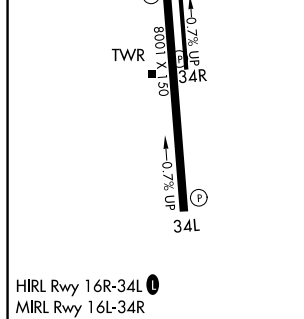
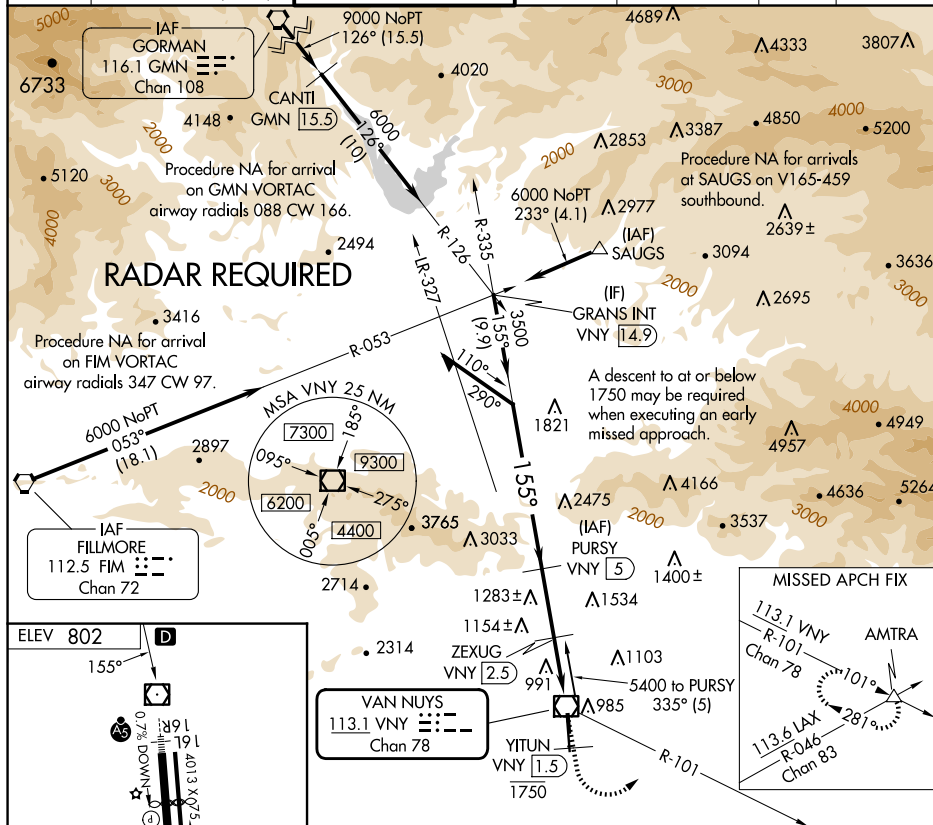


VOR-B
VAN NUYS (VNY)

- | | | |
|------------------------------|--|--|
| <p>V
A</p> | <p>DME required and RADAR required for monitoring of missed approach. Circling Rwy 16L NA at night. Circling NA for Cat D west of Rwy 16R-34L. When local altimeter setting not received, use Burbank altimeter setting and increase all MDAs 20 feet.</p> | <p>MISSED APPROACH: Climb on VNY VOR/DME R-155 to cross YITUN/VNY 1.5 DME at or below 1750 then climbing left turn to 4000 on VNY VOR/DME R-101 to AMTRA INT and hold.</p> |
|------------------------------|--|--|

ATIS 127.55	SOCAL APP CON 120.4 360.6 (NORTH) 134.2 338.2 (WEST)	VAN NUYS TOWER* 119.3 (CTAF) 0 239.0	GND CON 121.7	CLNC DEL 126.6 239.0	CPDLC	UNICOM 122.95
----------------	--	---	------------------	-------------------------	-------	------------------



Remain within 10 NM 		PURSY VNY <u>5</u> ZEXUG VNY <u>2.5</u> 2580 2.5 NM		Cross VNY <u>1.5</u> 1750 VNY R-101 4000 VNY VOR/DME		AMTRA 	
CATEGORY	A		B		C		D
C CIRCLING	1660-1¼ 858 (900-1¼)				1660-2½ 858 (900-2½)		1740-3 938 (1000-3)

SW-3, 07 AUG 2025 to 04 SEP 2025