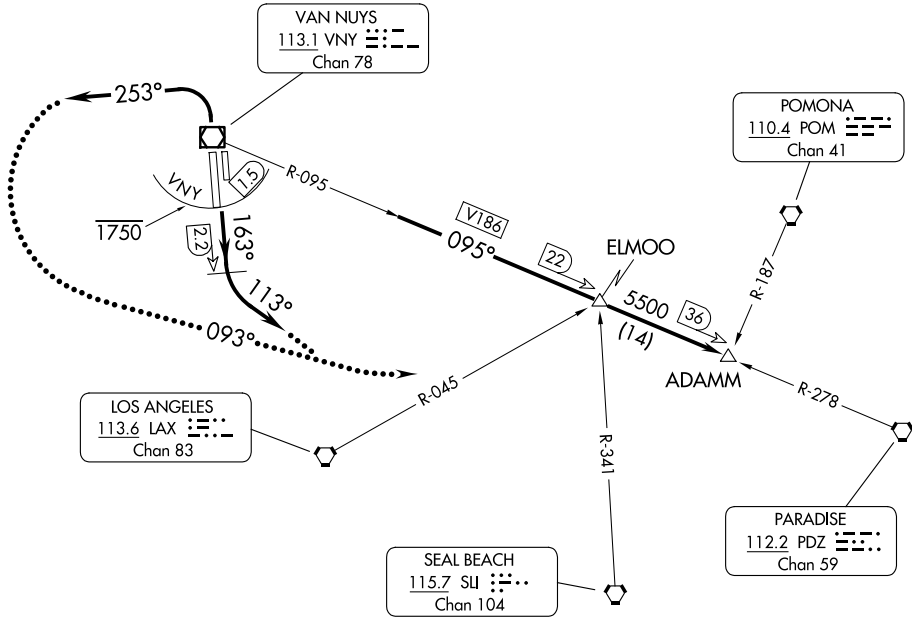


ATIS
127.55
CLNC DEL
126.6 239.0
CPDLC
GND CON
121.7
SOCAL DEP CON
124.6 298.85

TOP ALTITUDE:
ASSIGNED BY ATC

TAKEOFF MINIMUMS

Rwy 16L: Standard with minimum climb of 380’ per NM to 2600.
Rwy 16R: Standard with minimum climb of 450’ per NM to 2600.
Rwys 34L/R: Standard with minimum climb of 480’ per NM to 4200.



NOTE: RADAR required.
NOTE: DME required.
NOTE: Cross VNY DME 1.5 DME south at or below 1750.

NOTE: Chart not to scale.

DEPARTURE ROUTE DESCRIPTION

TAKEOFF RUNWAYS 16L/R: Climb on heading 163° until VNY 2.2 DME, then climbing left turn heading 113°, FOR RADAR VECTORS to VNY R-095 to ADAMM, thence. . . .

TAKEOFF RUNWAYS 34L/R: Climbing left turn heading 253°, FOR RADAR VECTORS to VNY R-095 to ADAMM, thence. . . .

. . . .on (transition) or (assigned route). Maintain ATC assigned altitude, expect filed altitude/flight level 10 minutes after departure.

LOST COMMUNICATIONS: If not in contact with departure control within 3 NM, turn left heading 093° to intercept VNY R-095 to ADAMM INT maintain 5500’ or as assigned.