

APP CRS  
**358°**

Rwy Idg  
TDZE  
**916**

Apt Elev  
**916**

RNAV (GPS) RWY 36

GOULD PETERSON MUNI (K57)

RNP APCH - GPS.

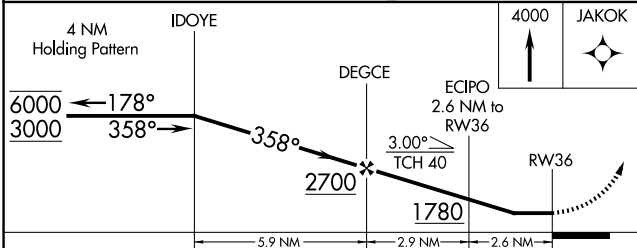
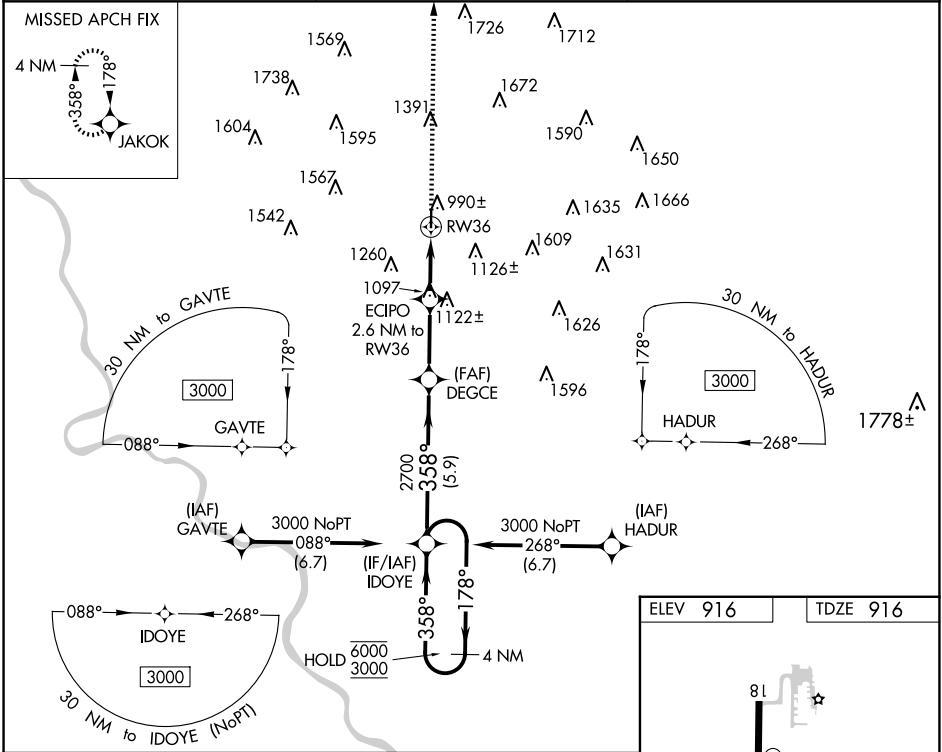
▼

NA

Rwy 36 helicopter visibility reduction below ¾ SM NA.  
Circling Rwy 18 NA at night.  
Use Shenandoah altimeter setting; when not received,  
use Clarinda altimeter setting and increase all MDAs 20 feet.

MISSED APPROACH: Climb to 4000 direct JAKOK and hold,  
Continue climb-in-hold to 4000

SDA AWOS-3 <b>125.525</b>	MINNEAPOLIS CENTER <b>119.6 290.4</b>	CTAF <b>122.9 0</b>
------------------------------	--	------------------------



CATEGORY	A	B	C	D
LNNAV MDA	1460-1	544 (600-1)	1460-1½ 544 (600-1½)	NA
CIRCLING	1520-1 604 (700-1)	1540-1 624 (700-1)	1680-2¼ 764 (800-2¼)	NA

