

ZIAS5 FIVE DEPARTURE

SANTA FE RGNL (SAF)  
SANTA FE, NEW MEXICO

AL-548 (FAA)

RADAR required.

TOP ALTITUDE:  
ASSIGNED BY ATC

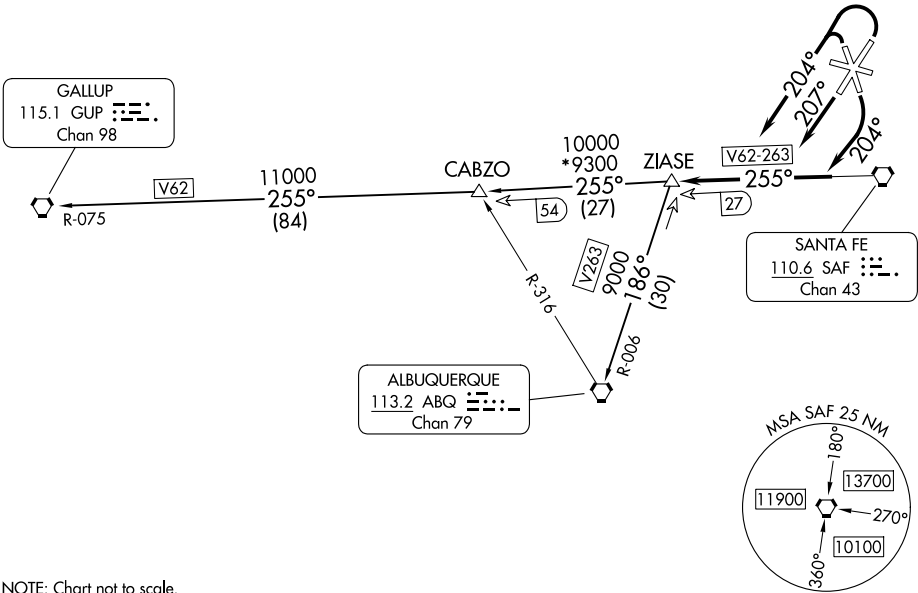
ALBUQUERQUE CENTER  
132.8 346.35  
ATIS  
128.55  
GND CON  
121.7  
SANTA FE TOWER\*  
119.5 239.3

CAUTION: Mountainous terrain all quadrants.

TAKEOFF MINIMUMS

Rwys 10, 28: NA - ATC.  
Rwys 15, 20: Standard.  
Rwy 2: Standard with minimum climb of 235' per NM to 8200.  
Rwy 33: Standard with minimum climb of 310' per NM to 8200.

SW-1, 07 AUG 2025 to 04 SEP 2025



SW-1, 07 AUG 2025 to 04 SEP 2025



DEPARTURE ROUTE DESCRIPTION

TAKEOFF RUNWAYS 2, 33: Climbing left turn to heading 204° thence. . . .  
TAKEOFF RUNWAY 15: Climbing right turn to heading 204° thence. . . .  
TAKEOFF RUNWAY 20: Climb on heading 207° thence. . . .  
. . . . intercept and proceed on SAF R-255 to ZIAS5 INT, then on assigned transition.  
Maintain ATC assigned altitude.

ALBUQUERQUE TRANSITION (ZIAS5.ABQ): From over ZIAS5 INT on ABQ R-006 to ABQ VORTAC.

GALLUP TRANSITION (ZIAS5.GUP): From over ZIAS5 INT on SAF R-255 and GUP R-075 to GUP VORTAC.

ZIAS5 FIVE DEPARTURE

(ZIAS5.ZIASE) 25JAN24

SANTA FE, NEW MEXICO  
SANTA FE RGNL (SAF)