

WAAS CH <b>63039</b> <b>W02A</b>	APP CRS <b>027°</b>	Rwy Ldg TDZE <b>6303</b> Apt Elev <b>6349</b>
--	------------------------	---

RNAV (GPS) RWY 2

SANTA FE RGNL (SAF')

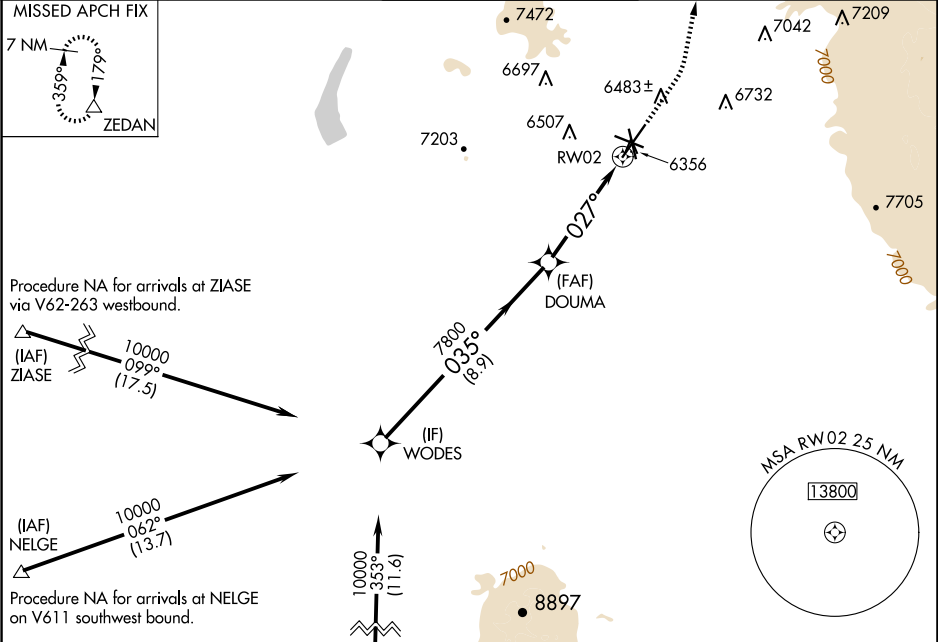
⚠

For uncompensated Baro-VNAV systems, LNAV/VNAV NA below -18°C (0°F) or above 45°C (113°F). DME/DME RNP-0.3 NA.

MISSED APPROACH:

Climb to 7300 then climbing left turn to 11000 direct ZEDAN and hold.

ATIS <b>128.55</b>	ALBUQUERQUE CENTER <b>132.8 346.35</b>	SANTA FE TOWER ★ <b>119.5 (CTAF) 0 239.3</b>	GND CON <b>121.7</b>	UNICOM <b>122.95</b>
-----------------------	---	---	-------------------------	-------------------------



SW-1, 07 AUG 2025 to 04 SEP 2025

SW-1, 07 AUG 2025 to 04 SEP 2025

ELEV 6349 <b>D</b> TDZE 6303				
<div><div>WODES</div><div>GP 3.00° TCH 53</div><div>DOUMA</div><div>7800</div><div>RW02</div><div>7300</div><div>11000</div><div>ZEDAN</div><div>△</div><div>*LNAV only</div><div>*1.2 NM to RW02</div><div>8.9 NM</div><div>3.4 NM</div><div>1.2 NM</div></div>				
CATEGORY	A	B	C	D
LPV DA	6503-¾ 200 (200-¾)			
LNAV/VNAV DA	6553-⅞ 250 (300-⅞)			
LNAV MDA	6740-1	437 (400-1)	6740-1¼	437 (400-1¼)
CIRCLING	6800-1 451 (500-1)	6920-1 571 (600-1)	7340-3 991 (1000-3)	7660-3 1311 (1400-3)

REIL Rwy 10, 15, 20 and 33

MIRL Rwy 2-20 and 15-33