

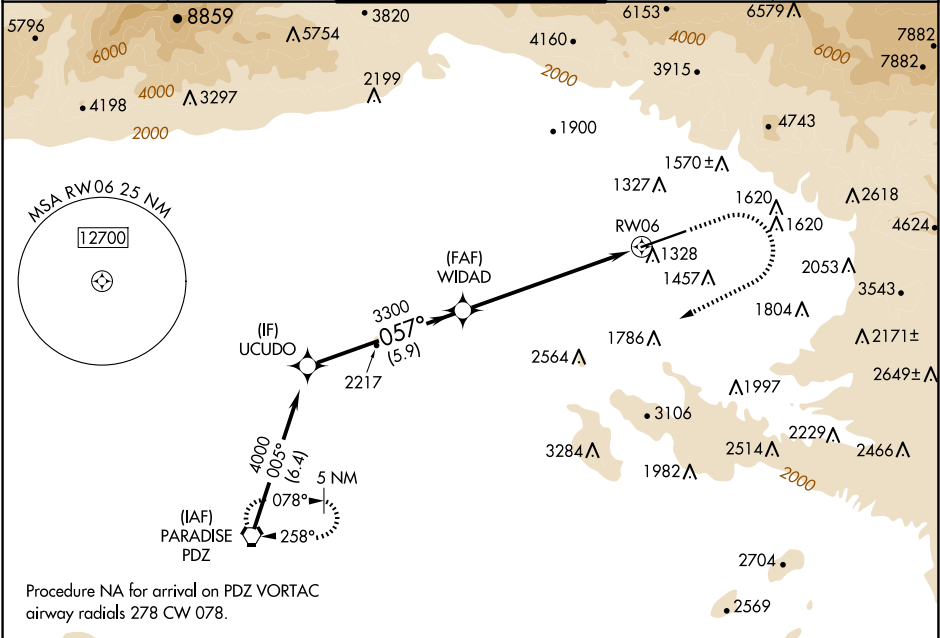
APP CRS	Rwy Idg	10000
057°	TDZE	1103
	Apt Elev	1159

# RNAV (GPS) Y RWY 6

SAN BERNARDINO INTL (SBD)

RNP APCH	MISSED APPROACH: Climb to 2800 then climbing right turn to 6000 direct PDZ VORTAC and hold, continue climb-in-hold to 6000.
Circling NA northwest of Rwy 6-24. When local altimeter setting not received, use Ontario altimeter setting and increase all MDA 80 feet.	

D-ATIS 124.175	SOCAL APP CON 127.0 318.2	SAN BERNARDINO TOWER ★ 119.45 (CTAF) 0	GND CON 121.8	UNICOM 122.975
-------------------	------------------------------	---	------------------	-------------------



Procedure NA for arrival on PDZ VORTAC  
airway radials 278 CW 078.

