

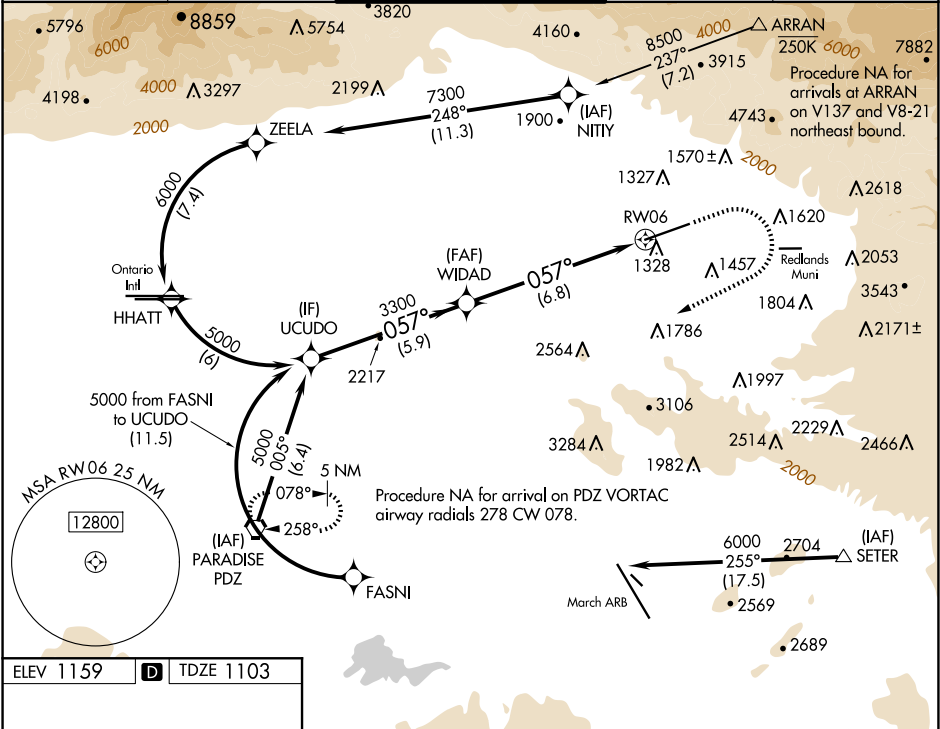
APP CRS	Rwy Idg	10000
057°	TDZE	1103
	Apt Elev	1159

RNAV (RNP) X RWY 6

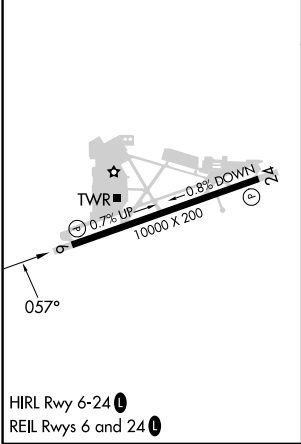
SAN BERNARDINO INTL (SBD)

RNP AR APCH-GPS. Authorization required. From NITTY or SETER: RF.	MISSED APPROACH: Climb to 2000 then climbing right turn to 6000 direct PDZ VORTAC and hold. *Missed approach requires minimum climb of 350 feet per NM to 4000; if unable to meet climb gradient, see RNAV (GPS) Y RWY 6.
For uncompensated Baro-VNAV systems, procedure NA below 2°C or above 54°C.	

D-ATIS 124.175	SOCAL APP CON 127.0 318.2	SAN BERNARDINO TOWER ★ 119.45 (CTAF) 0	GND CON 121.8	UNICOM 122.975
-------------------	------------------------------	---	------------------	-------------------



ELEV 1159	D	TDZE 1103
-----------	---	-----------



UCUDO	WIDAD	2000	6000	PDZ
5000	3300	↑	↗	⬠
GP 3.00°	3300			
TCH 51				
	5.9 NM	6.8 NM		
CATEGORY	A	B	C	D
RNP 0.15 DA*		1353/40	250 (200-¾)	
RNP 0.30 DA*		1403/45	300 (300-¾)	
AUTHORIZATION REQUIRED				