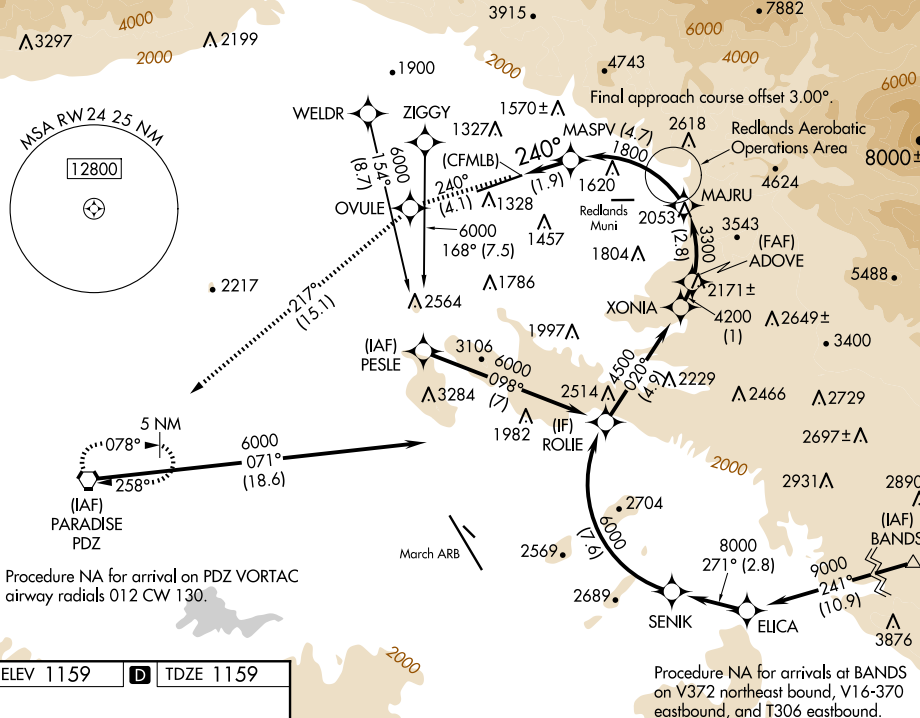


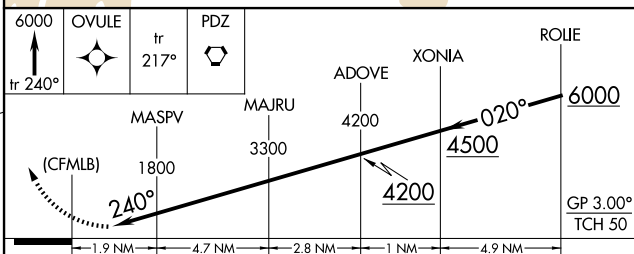
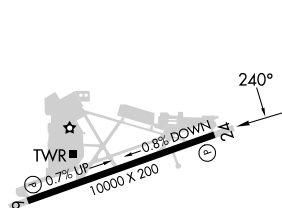
RNAV (RNP) RWY 24  
SAN BERNARDINO INTL (SBD)

**MISSED APPROACH:** Climb to 6000 on track 240° to OVULE and track 217° to PDZ VORTAC and hold, continue climb-in-hold to 6000.

For uncompensated Baro-VNAV systems, procedure NA below 2°C or above 54°C.

UNICOM  
122.975

ELEV 1159	<b>D</b>	TDZE 1159
-----------	----------	-----------



CATEGORY	A	B	C	D
RNP 0.15 DA	1520/55 361 (400-1)			

**AUTHORIZATION REQUIRED**

REIL Rwys 6 and 24 L

SAN BERNARDINO INTL (SBD)  
RNAV (RNP) RWY 24