

SW-3, 07 AUG 2025 to 04 SEP 2025

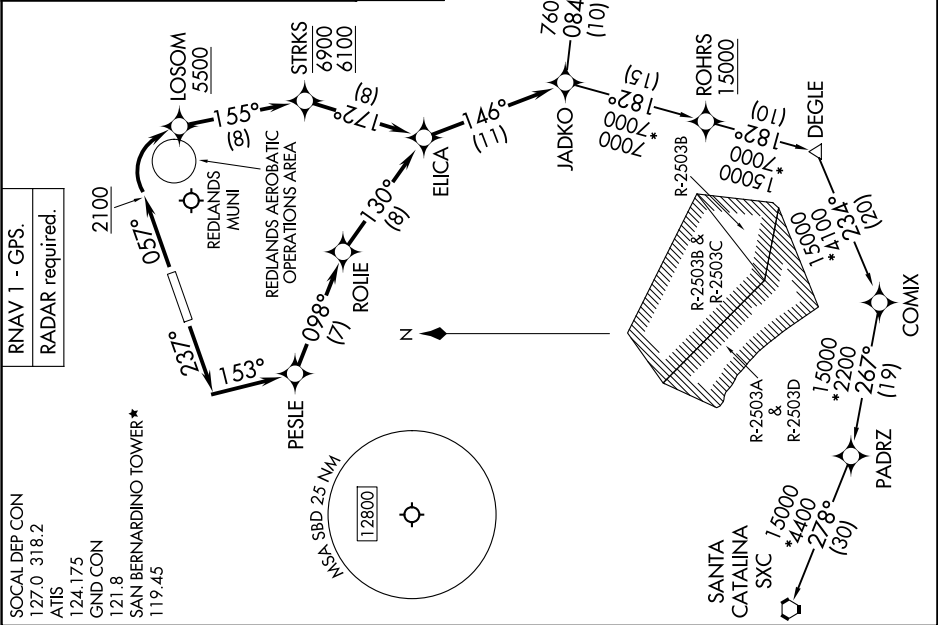
**DEPARTURE ROUTE DESCRIPTION**

**TAKEOFF RUNWAY 6:** Climb on heading 057° to 2100, then climbing right turn direct LOSOM to cross LOSOM at or above 5500, then on track 155° to cross STRKS between 6100 and 6900 then on track 172° to ELICA, thence. . . .

**TAKEOFF RUNWAY 24:** Climb on heading 237° to intercept course 153° to PESLE, then on track 098° to ROIE, then on track 130° to ELICA, thence. . . . on track 146° to JADKO. Expect filed altitude 10 minutes after departure.

AVRRY TRANSITION (JADKO1.AVRRY)  
MTBAL TRANSITION (JADKO1.MTBAL)  
SANTA CATALINA TRANSITION (JADKO1.SXC)

**TOP ALTITUDE:**  
**AVRRY AND MTBAL TRANSITIONS: 14000;**  
**SANTA CATALINA TRANSITION: 15000.**



SW-3, 07 AUG 2025 to 04 SEP 2025

NOTE: Chart not to scale.