

24305

RNAV (GPS) Y RWY 3R
PRESCOTT RGNL/ERNEST A LOVE FLD (PRC)

T Baro-VNAV NA.
A Rwy 3R helicopter visibility reduction below $\frac{3}{4}$ SM NA.
Circling Rwy 3L, 12, 30 NA at night.

MISSED APPROACH: Climb to 9100 direct PEVYU and hold.

Procedure NA for arrivals at MUMTE on V12 westbound.

(IAF) MUMTE

9800
11.5°
(26.8)

7640 •

5382 A

5061 A

RW03R

UYOSA
2.6 NM to RW03R

OMGIJ
3.7 NM to RW03R

ZOGIR
6.4 NM to RW03R

(FAF) GOVTE

7180 •

8100
028°
(6.9)

(IF) HOLEB

7799 •

6962 •

5188 ±

6278 ±

7163 A

9200

MSA RW03R 25 NM

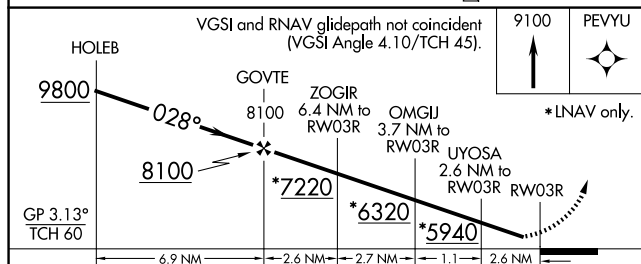
Procedure NA for arrivals at KARLO on V105 southbound.


(IAF) KARLO

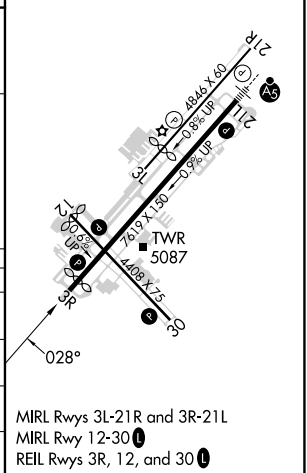
9800
9.0°
(11.7)

ELEV	5045	D	TDZE	5022
------	------	---	------	------

ELEV	5045	D	TDZE	5022
------	------	----------	------	------



CATEGORY		A	B	C	D
LPV	DA	5311-1 289 (300-1)			NA
RNAV/ VNAV	DA	5549-1 ⁵ / ₈ 527 (600-1 ⁵ / ₈)			NA
RNAV	MDA	5640-1 618 (600-1)	5640-1 ³ / ₄ 618 (600-1 ³ / ₄)		NA
 CIRCLING		5640-1 595 (600-1)	5760-1 715 (800-1)	6080-3 1035 (1100-3)	6680-3 1635 (1700-3)



PRESCOTT RGNL/ERNEST A LOVE FLD (PRC)
W RNAV (GPS) Y RWY 3R

34°39'N-112°25'W