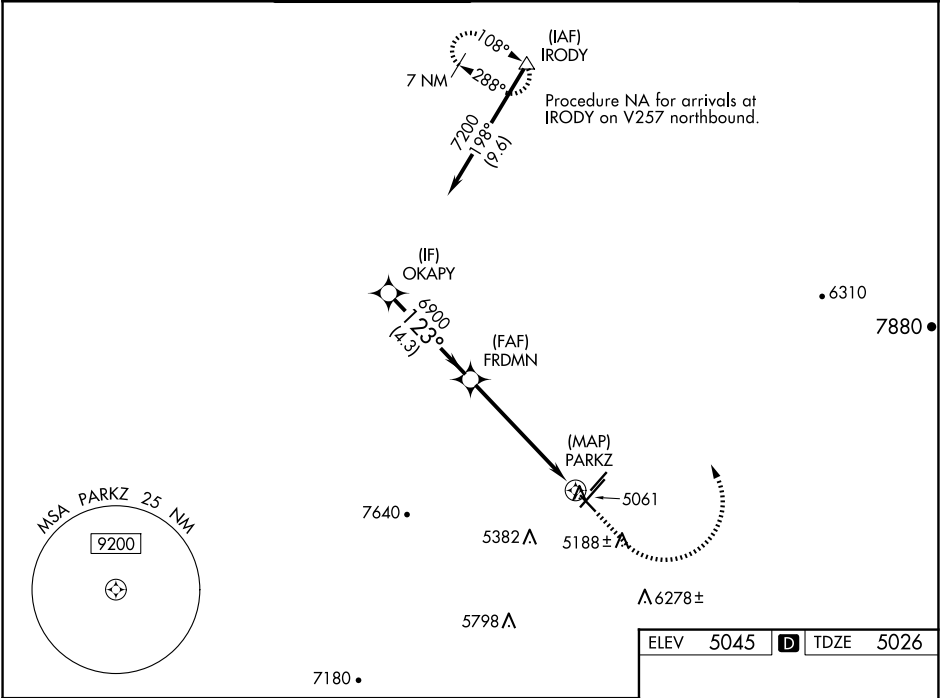


WAAS CH 49235 W12A	APP CRS 123°	Rwy Idg TDZE Apt Elev 4258 5026 5045
----------------------------------------	------------------------	--------------------------------------------------------------------------

RNAV (GPS) RWY 12

PRESCOTT RGNL/ERNEST A LOVE FLD (PRC)

RNP APCH. ▼ For uncompensated Baro-VNAV systems, LNAV/VNAV NA below -11°C or above 49°C. Rwy 12 helicopter visibility reduction below 1 SM NA. Straight-in Rwy 12 NA at night, Circling Rwy 12, 3L, 30 NA at night. ▲		MISSED APPROACH: Climb to 5500 then climbing left turn to 9000 direct IRODY and hold, continue climb-in-hold to 9000.				
ATIS 127.2	PHOENIX APP CON 133.575 281.55	PRESCOTT TOWER ★ 125.3 (CTAF) 0 257.9	GND CON 121.7	CLNC DEL 119.25	128.75 0	UNICOM 122.95



VGSi and RNAV glidepath not coincident (VGSi Angle 4.24/TCH 52).		5500	9000	IRODY
OKAPY		FRDMN		
7200		6900		
GP 3.00° TCH 48				
123°				
6900				
PARKZ				
4.3 NM		5.5 NM	0.3	
CATEGORY	A	B	C	D
LPV DA	5276-1		250 (300-1)	
LNAV/VNAV DA	5432-1 3/8		406 (400-1 3/8)	
LNAV MDA	5520-1	494 (500-1)	5520-1 3/8	494 (500-1 3/8)
CIRCLING	5520-1 475 (500-1)	5760-1 715 (800-1)	6080-3 1035 (1100-3)	6680-3 1635 (1700-3)

