

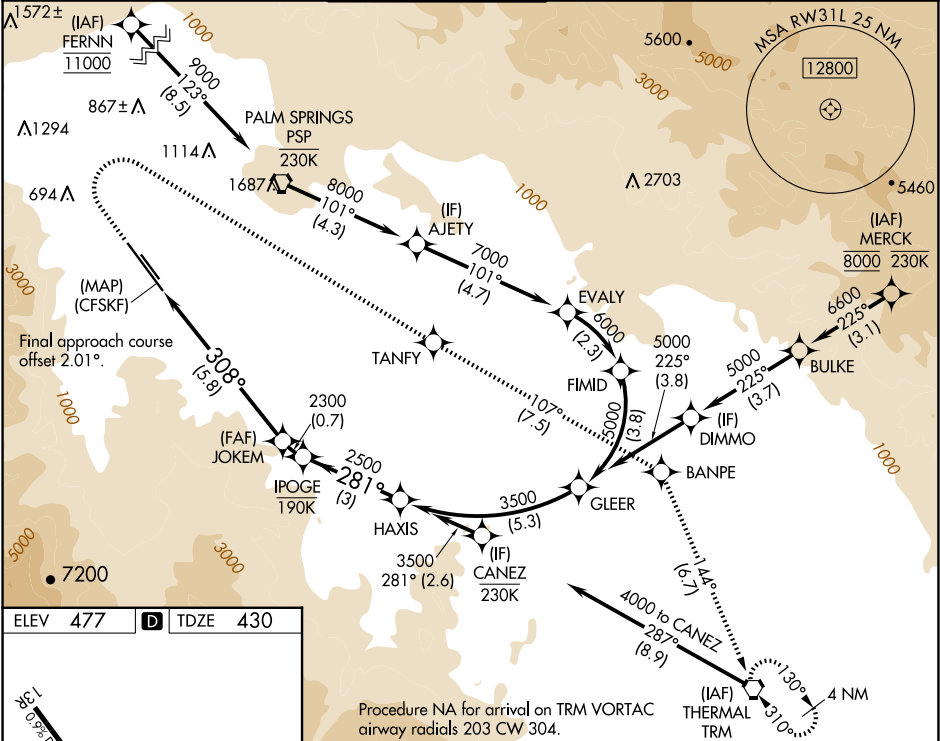
APP CRS	Rwy Ldg	8500
308°	TDZE	430
	Apt Elev	477

RNAV (RNP) Y RWY 31L

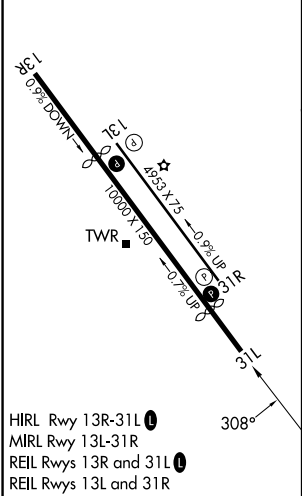
PALM SPRINGS INTL (PSP)

RNP AR APCH - GPS, RF, min RNP 0.30. Authorization required.	MISSED APPROACH: Climb to 900 then climbing right turn to 4000 direct TANFY and track 107° to BANPE and track 144° to TRM VORTAC and hold. Missed approach requires minimum climb of 365 feet per NM to 2200; if unable to meet climb gradient, see RNAV (GPS) Z RWY 31L.
For uncompensated Baro-VNAV systems, procedure NA below 4°C or above 54°C.	

ATIS 124.65	SOCAL APP CON 126.7 370.95 135.275 251.1	PALM SPRINGS TOWER* 119.7 (CTAF) 377.05	GND CON 121.9	CLNC DEL 128.35	UNICOM 122.95
----------------	--	--	------------------	--------------------	------------------



ELEV 477	TDZE 430
----------	----------



900	4000	TANFY	tr 107°	BANPE	tr 144°	TRM		HAXIS
See planview for multiple IF locations.								
JOKEM								IPOGE
2300								281°
2300								2500
2300								2300
5.8 NM								0.7 NM
3 NM								GP 3.00°
								TCH 55
CATEGORY	A	B	C	D				
RNP 0.13 DA	680-¾ 250 (300-¾)							
RNP 0.30 DA	718-¾ 288 (300-¾)							
AUTHORIZATION REQUIRED								