

JEEON ONE DEPARTURE (RNAV)

AL-545 (FAA)

PALM SPRINGS INTL (PSP)
PALM SPRINGS, CALIFORNIA

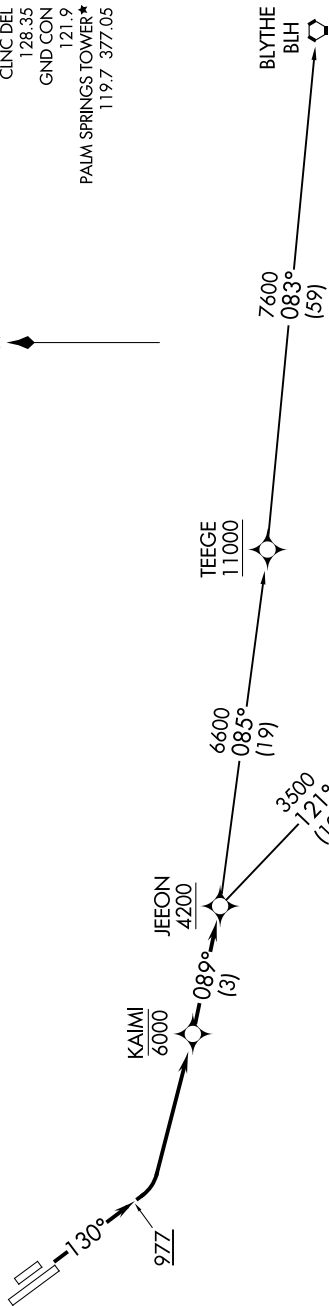
SW-3, 07 AUG 2025 to 04 SEP 2025

**TOP ALTITUDE:
ASSIGNED BY ATC**

RNAV 1 - GPS.
RADAR required

SOCAL DEP CON	
126.7	370.95
ATIS	
124.65	
CLINC DEL	
128.35	
GND CON	
121.9	
PALM SPRINGS TOWER★	
119.7	377.05

Z



TAKEOFF MINIMUMS

Rwys 13L/R: Standard with minimum climb of 500'/NM to 977'.

NOTE: Chart not to scale.

DEPARTURE ROUTE DESCRIPTION

TAKEOFF RUNWAYS 13L/R: Climb on heading 130° to 977, then left turn direct KAIMI at or below 6000, thence then on track 089° to cross JEEON at or above 4200, then on assigned (transition). Maintain ATC assigned altitude, expect filed altitude 10 minutes after departure.

BLYTHE TRANSITION (JEEON1.BLH)
THERMAL TRANSITION (JEEON1.TRM)

JEEON ONE DEPARTURE (RNAV)
(JEEON1.JEEON) 12JUN25

PALM SPRINGS, CALIFORNIA
PALM SPRINGS INTL (PSP)

SW-3, 07 AUG 2025 to 04 SEP 2025