


TACAN Y RWY 31

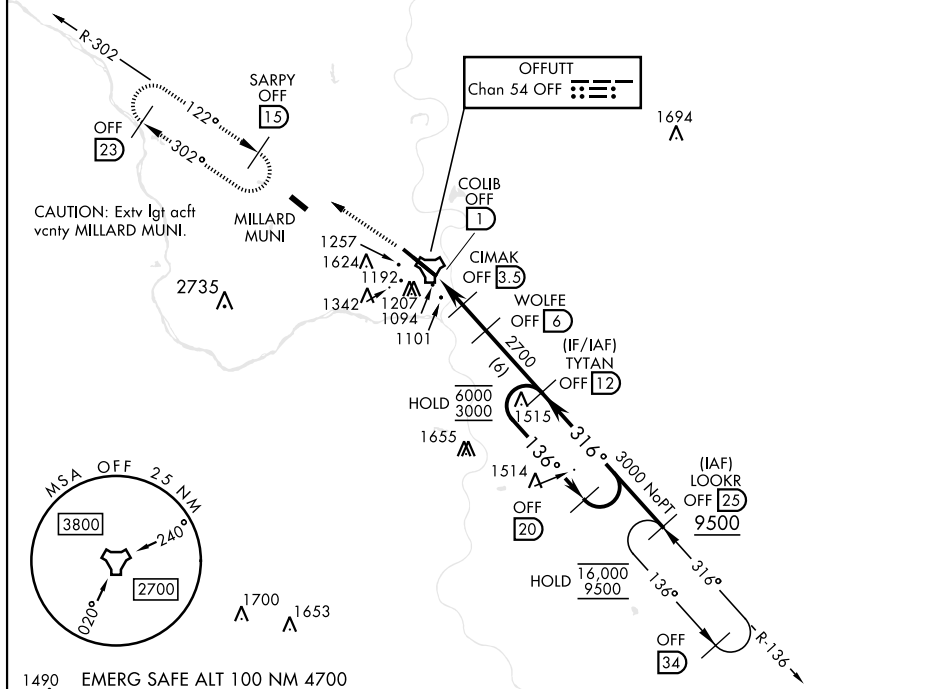
TACAN OFF Chan 54	APCH CRS 316°	Rwy Idg 10,612 TDZE 991 Arpt Elev 1048
-----------------------------	-------------------------	---

[USAF]

OFFUTT AFB (KOFF)

<p>▼ * When ALS inop, increase RVR to 55, vis to 1 mile. **Circling not authorized N of Rwy 13-31.</p>		<p>ALSF-1</p> 	<p>MISSED APPROACH: Climb to 3000 via OFF TACAN R-302 to SARPY and hold.</p>
<p>ATIS</p> <p>126.025 273.5</p>	<p>OMAHA APP CON 124.5 263.0 (E) 135.875 354.05 (W)</p>	<p>TOWER</p> <p>123.7 279.625</p>	<p>GND CON</p> <p>121.7 289.4</p>

CAUTION: When circling to Rwy 13 at night, operational VGSIs required, remain on or above VGSIs glidepath until threshold.



CATEGORY	A	B	C	D	E
S-31*	1360/24	368 (400-½)	1360/40	368 (400-¾)	
C CIRCLING**	1500-1 452 (500-1)	1560-1 512 (600-1)	1660-1¼ 612 (700-1¼)	1940-3	892 (900-3)

HIRL Rwy 13-31
Rwy 13-31 ALS nstd