

## RNAV (GPS) RWY 13

|                          |                  |   |
|--------------------------|------------------|---|
| WAAS<br>CH 91358<br>W13A | APCH CRS<br>127° | Rwy Idg 10,695<br>TDZE 1048<br>Arpt Elev 1048 |
|--------------------------|------------------|---|

- (USAF)

OFFUTT AFB (KOFF)

RNP APCH-GPS

**T** \* When ALS inop, increase vis to 1 1/4 miles.  
 \*\* When ALS inop, increase CAT AB RVR to 55, vis to 1 mile; CAT CDE vis to 1 1/2 miles.

ALSF-1

**MISSED APPROACH:** Climb to 3000 direct WONSJ, track 127° to SLPRS and hold.

|                              |  |                               |                               |
|------------------------------|--|-------------------------------|-------------------------------|
| ATIS<br><b>126.025 273.5</b> | OMAHA APP CON/DEP CON<br><b>124.5 263.0 E</b><br><b>135.875 354.05 W</b> | TOWER<br><b>123.7 279.625</b> | GND CON<br><b>121.7 289.4</b> |
|------------------------------|--|-------------------------------|-------------------------------|

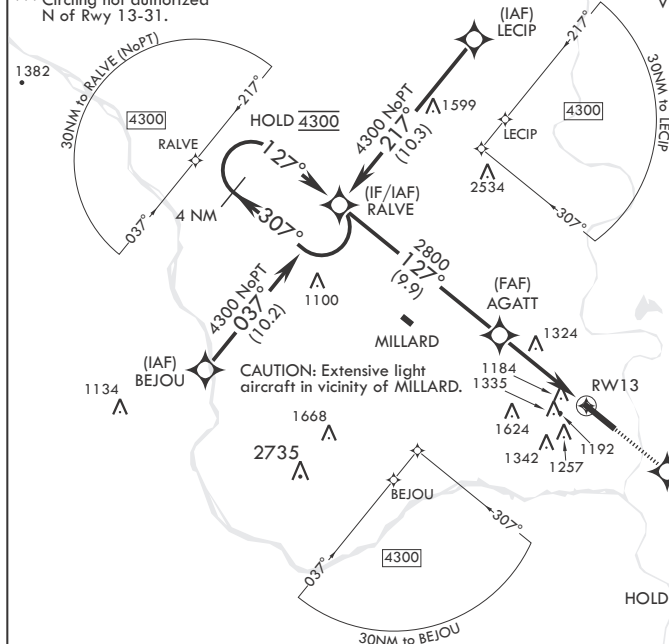
\*\*\* Circling not authorized  
N of Rwy 13-31.

Visibility reduction by helicopters NA.

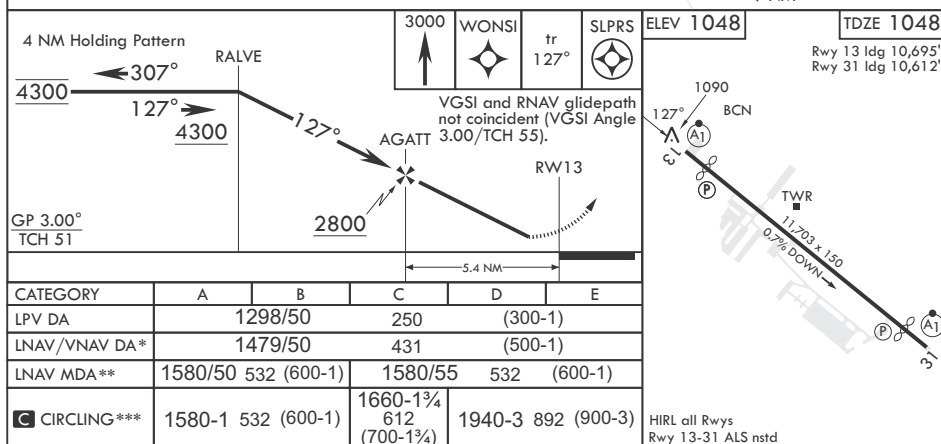
Baro-VNAV NA  
below -17°C (2°F).

**CAUTION:** Straight-in rwy 13 at night, operational VGSI required, remain on or above VGSI glidepath until threshold.

USAF ONLY: When VGSI inop, straight-in rwy 13 authorized with aircrew command approval. Unlit terrain 1042' MSL, 263' from threshold, 6' right of course.



EMERG SAFE ALT 100 NM 4700



OMAHA, NEBRASKA

41°07'N - 95°55'W

OFFUTT AFB (KOFF)

## RNAV (GPS) RWY 13

Amdt 1 22FEB24