

APP CRS	Rwy Idg	5005
270°	TDZE	956
	Apt Elev	983

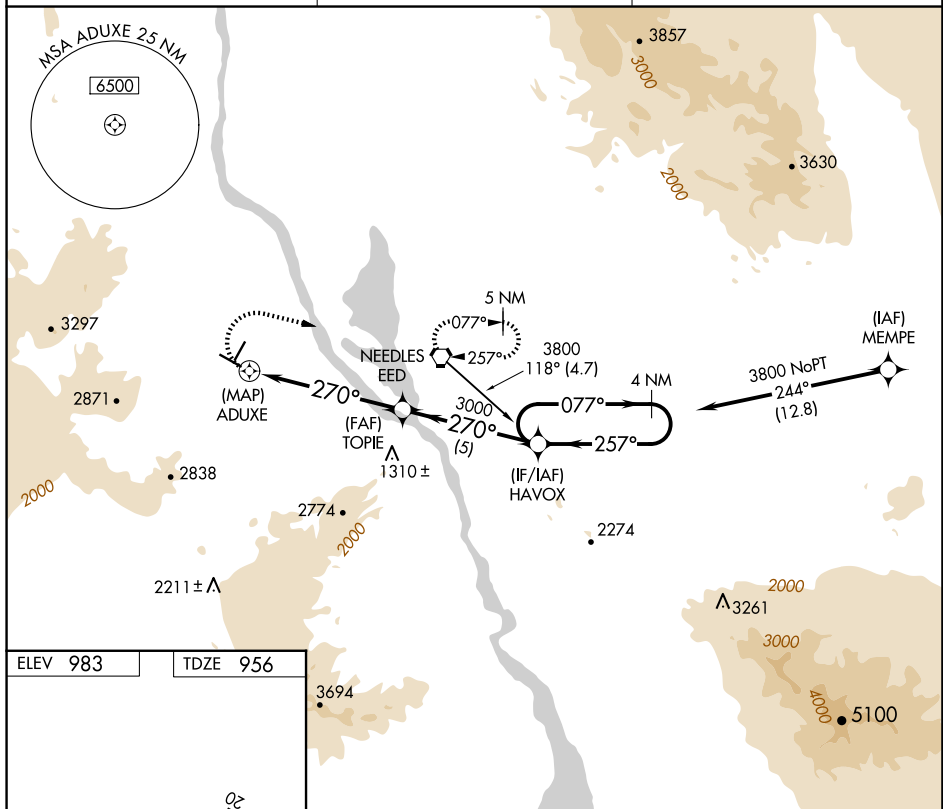
RNAV (GPS) RWY 29
NEEDLES (EED)

T Straight-in minimums not authorized at night.
A GPS or RNP-0.3 required. DME/DME RNP-0.3 NA.
Circling NA for Cats C and D south of Rwy 11-29.

MISSED APPROACH: Climbing right turn to 6000 direct to EED VORTAC and hold.

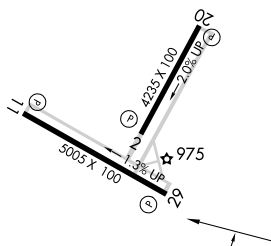
ASOS
128.325

LOS ANGELES CENTER
134.65 360.65

UNICOM
123.0 (CTAF) **L**

ELEV 983

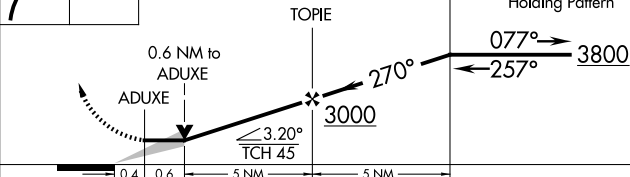
TDZE 956

MIRL Rwyys 2-20 and 11-29 REIL Rwys 11 and 29 **L**

6000	EED	VGSI and descent angle not coincident (VGSI Angle 3.00/TCH 40).
------	-----	---

HAVOX

4 NM
Holding Pattern



CATEGORY	A	B	C	D
LNAB MDA	1300-1 344 (400-1)			1300-1¼ 344 (400-1¼)
CIRCLING	1560-1 577 (600-1)	1680-1 697 (700-1)	1680-2 697 (700-2)	1960-3 977 (1000-3)

RNAV (GPS) RWY 29

SW-3, 07 AUG 2025 to 04 SEP 2025

SW-3, 07 AUG 2025 to 04 SEP 2025