

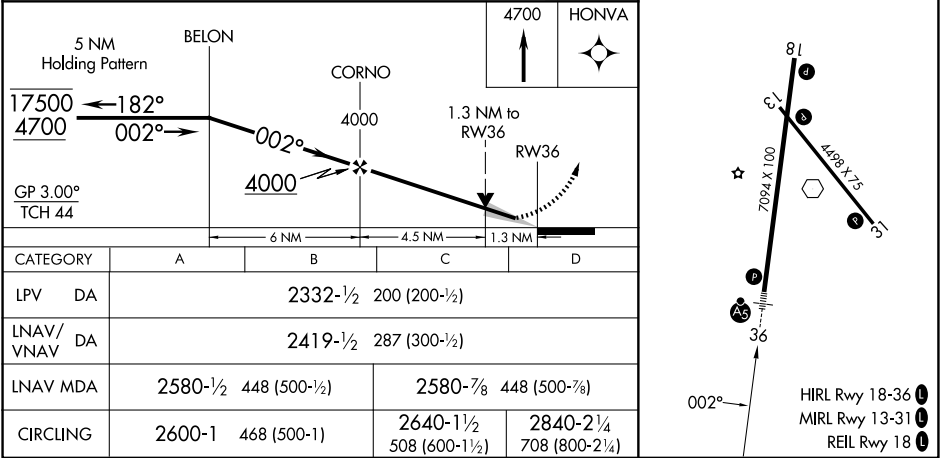
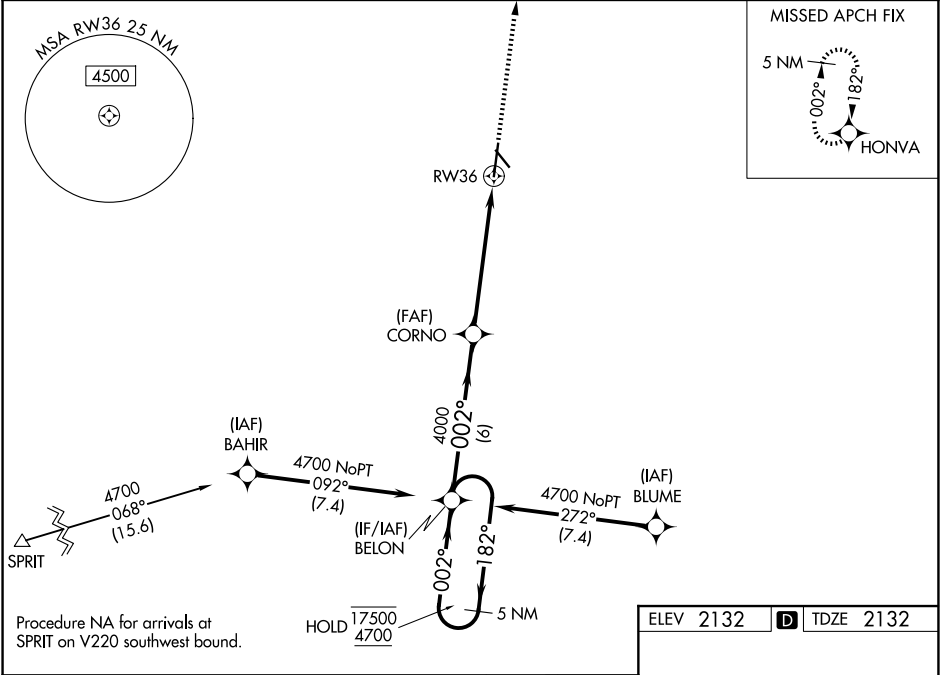
WAAS CH <b>90113</b> <b>W36A</b>	APP CRS <b>002°</b>	Rwy Ldg TDZE Apt Elev	<b>7094</b> <b>2132</b> <b>2132</b>
--	------------------------	-----------------------------	---

RNAV (GPS) RWY 36

KEARNEY RGNL (E.A.R.)

RNP APCH - GPS.	MALSR	MISSED APPROACH: Climb to 4700 direct HONVA and hold.
<div><div>▼</div><div>▲</div></div> For uncompensated Baro-VNAV systems, LNAV/VNAV NA below -22°C or above 54°C. For inop ALS, increase LNAV/VNAV all Cats visibility to ¾ SM.	<div><div>AS</div><div><div></div><div></div><div></div></div></div>	

AWOS-3PT <b>123.875</b>	MINNEAPOLIS CENTER <b>119.4 278.8</b>	UNICOM <b>123.0 (CTAF) 0</b>
----------------------------	--	---------------------------------



NC-2, 07 AUG 2025 to 04 SEP 2025

NC-2, 07 AUG 2025 to 04 SEP 2025