

WAAS CH 65631 W13A	APP CRS 136°	Rwy Ldg 4498 TDZE 2130 Apt Elev 2131
--	------------------------	---

RNAV (GPS) RWY 13

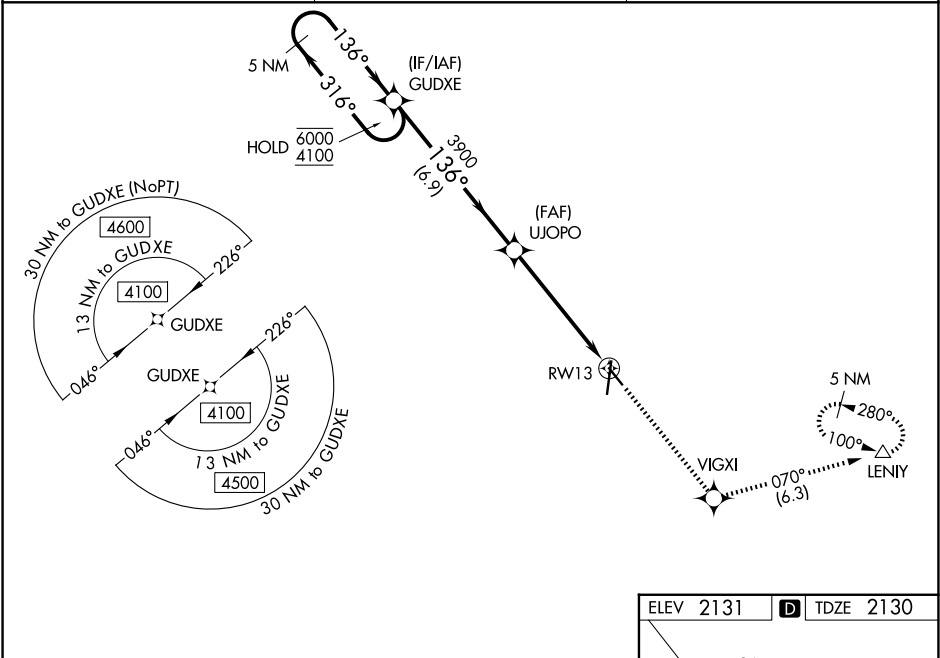
KEARNEY RGNL (E.A.R.)

RNP APCH.

Baro-VNAV and VDP NA when using Holdrege altimeter setting. For uncompensated Baro-VNAV systems, LNAV/VNAV NA below -23°C or above 54°C. When local altimeter setting not received, use Holdrege altimeter setting: increase LPV DA to 2407 feet and all Cats visibility $\frac{3}{8}$ SM; increase LNAV/VNAV DA to 2457 feet and all Cats visibility $\frac{3}{8}$ SM and all MDAs 80 feet; increase visibility LNAV and Circling Cat C $\frac{1}{8}$ SM.

MISSED APPROACH: Climb to 4300 direct VIGXI and on track 070° to LENIY and hold.

AWOS-3PT 123.875	MINNEAPOLIS CENTER 119.4 278.8	UNICOM 123.0 (CTAF) 0
----------------------------	--	---------------------------------



VGSI and RNAV glidepath not coincident (VGSI Angle 3.00/TCH 43).		4300	VIGXI	tr 070°	LENIY
5 NM Holding Pattern		GUDXE	UJOPO		
6000 ← 316° → 4100		136°	3900	*1.5 NM to RWY13	*LNAV only
GP 3.00° TCH 43				RWY13	
		6.9 NM	3.9 NM	1.5 NM	
CATEGORY	A	B	C	D	
LPV DA	2330-¾ 200 (200-¾)			NA	
LNAV/VNAV DA	2380-¾ 250 (300-¾)			NA	
LNAV MDA	2720-1	590 (600-1)	2720-1¾ 590 (600-1¾)	NA	
CIRCLING	2720-1	589 (600-1)	2720-1¾ 589 (600-1¾)	NA	

