

JOPLIN, MISSOURI

AL-540 (FAA)

24305

WAAS CH 97309 W18A	APP CRS 178°	Rwy Idg 6499 TDZE 965 Apt Elev 978
--	------------------------	---

RNAV (GPS) RWY 18
JOPLIN RGNL (JLN)

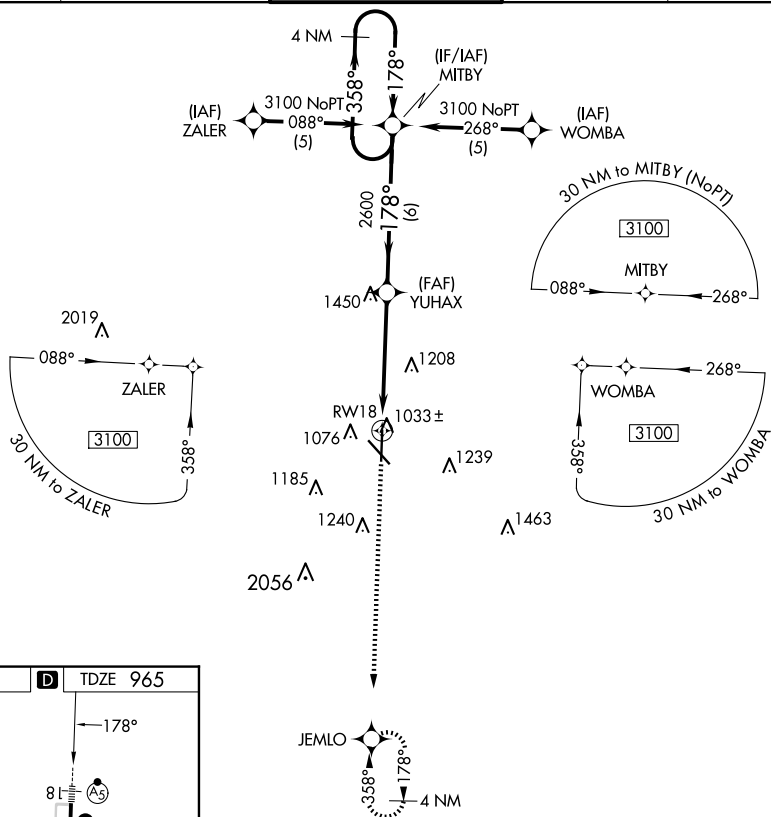
RNP APCH.

T For uncompensated Baro-VNAV systems, procedure NA below -16°C (4°F) or above 54°C (130°F). For inoperative MALSR, increase LPV all Cats visibility to RVR 5000.

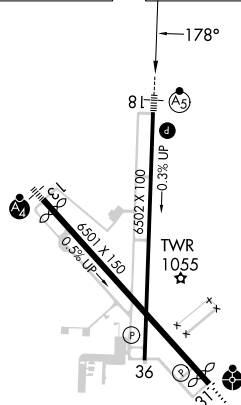


MISSED APPROACH:
Climb to 3100 direct
JFMLO and hold

ATIS 120.85	KANSAS CITY CENTER 128.6 282.325	JOPLIN TOWER★ 119.8 (CTAF) 0	GND CON 121.6	UNICOM 122.95
-----------------------	--	--	-------------------------	-------------------------



ELEV 978	D	TDZE 965
----------	----------	----------



HIRL Rwy 13-31 **L**
HIRL Rwy 18-36

3100 ↑	JEMLO ✦	* LNAV only.		YUHAX	MITBY	4 NM Holding Pattern	3100
		* 1.9 NM to RW18		2600	178°	358°	
		RW18					
		1.9 NM		3.1 NM	6 NM		
		A		B	C	D	
CATEGORY							
LPV DA		1220/24		255 (300-½)			
RNAV/DA		1460/60		495 (500-¼)			
RNAV MDA		1600/24 635 (700-½)		1600/60 635 (700-¼)		1600-1½ 635 (700-½)	
CIRCLING		1600-1¾ 622 (700-¾)				1600-2 622 (700-2)	

JOPLIN, MISSOURI
Orig-B 24MAY18

37°09'N-94°30'W

JOPLIN RGNL (JLN)

RNAV (GPS) RWY 18

NC-3, 07 AUG 2025 to 04 SEP 2025