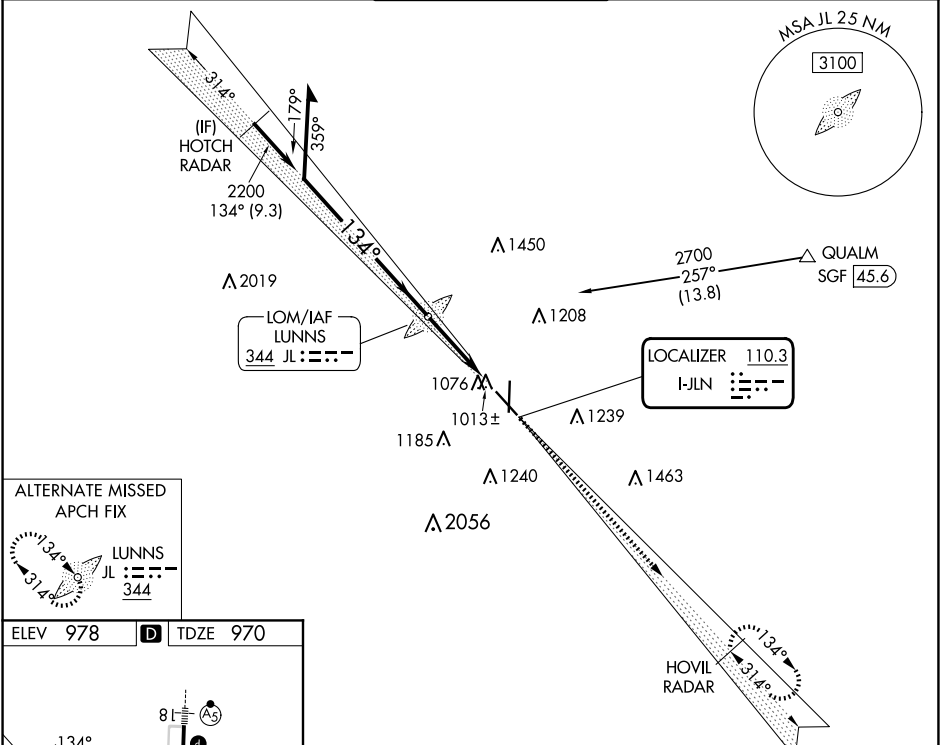


LOC I-JLN <b>110.3</b>	APP CRS <b>134°</b>	Rwy Idg <b>5813</b> TDZE <b>970</b> Apt Elev <b>978</b>
---------------------------	------------------------	---

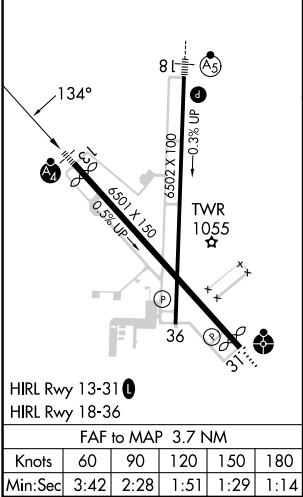
ILS or LOC RWY 13  
JOPLIN RGNL (JLN)

ADF required for LOC only. RADAR required.	MALSF	MISSED APPROACH: Climb to 3100 on I-JLN LOC localizer course southeast to HOVIL/RADAR and hold.
Autopilot coupled approach NA below 1147. Inop table does not apply to S-ILS 13 all Cats. MALSF (NSTD) 1368'.		

ATIS <b>120.85</b>	KANSAS CITY CENTER <b>128.6 282.325</b>	JOPLIN TOWER* <b>119.8 (CTAF) 0</b>	GND CON <b>121.6</b>	UNICOM <b>122.95</b>
-----------------------	--	--	-------------------------	-------------------------



ELEV 978	TDZE 970
----------	----------



Remain within 10 NM		JL LOM LUNNS	6000	3100	HOVIL RADAR
2700		134°	2178	I-JLN SE CRS	
GS 3.00°		134°	2200		
TCH 40					
			3.7 NM		
CATEGORY	A	B	C	D	
S-ILS 13	1170/40 200 (200-¾)				
S-LOC 13	1300/40 330 (400-¾)				
CIRCLING	1460-1 482 (500-1)	1500-1 522 (600-1)	1540-1½ 562 (600-1½)	1580-2 602 (700-2)	