

|                              |                        |   |
|------------------------------|------------------------|---|
| NDB HRU<br><b><u>407</u></b> | APP CRS<br><b>343°</b> | Rwy Idg <b>4184</b><br>TDZE <b>1481</b><br>Apt Elev <b>1481</b> |
|------------------------------|------------------------|---|

**NDB RWY 35**  
HERINGTON RGNL (HRU)



Use Manhattan altimeter setting; when not received, use Salina altimeter setting.

**MISSED APPROACH:** Climb to 3100 then right turn direct HRU NDB and hold.

MHK ASOS  
**119.075**

KANSAS CITY CENTER  
127.35 257.975

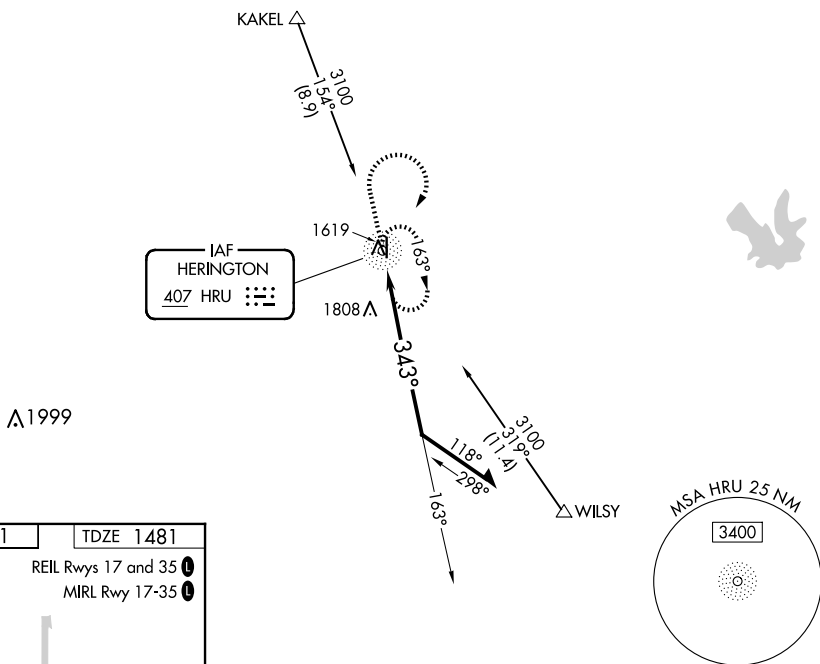
CTAF  
122.9 **L**

Diagram illustrating the 3100° heading and the HRU (Horizontal Reference Unit) and NDB (Non-Directional Beacon) relationship. The diagram shows a vertical line for the NDB, a horizontal line for the HRU, and a curved line for the 3100° heading. The angle between the NDB and HRU is 163°. The angle between the HRU and the 3100° heading is 343°. The text "Remain within 10 NM" is written near the 3100° heading.