

RNAV (GPS) RWY 32

APCH CRS	Rwy Idg	11,006
323°	TDZE	5663
	Arprt Elev	5663

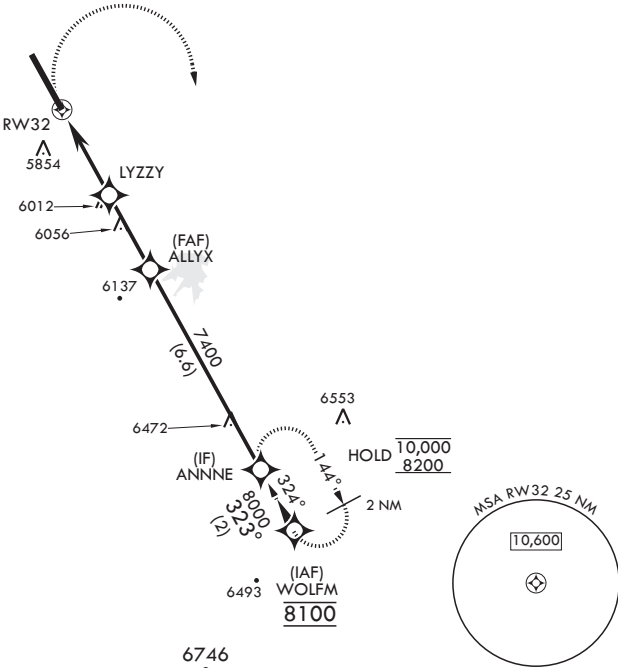
AL-538 (USAF)

BUCKLEY SFB (KBKF)


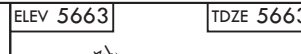
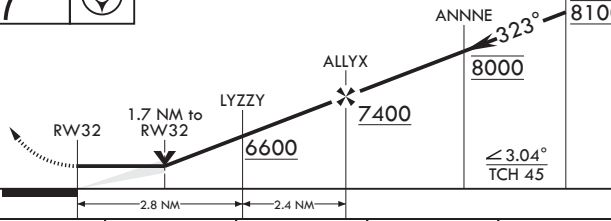
GPS required	ALS-F-1	MISSED APPROACH: Climbing right turn to 8200 to ANNNE and hold or as directed by ATC.
* When ALS inop increase CAT AB RVR to 55, vis to 1 mile; CAT CD vis to 1 3/4 miles. ** Circling NA East of Rwy 14-32.		

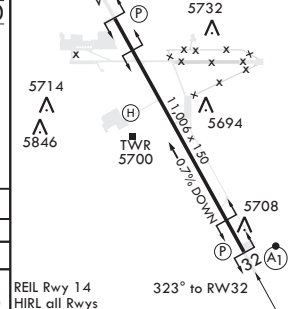
ATIS★ 119.675 259.3	DENVER APP CON/DEP CON 128.45 251.075	TOWER★ 121.0 291.675	GND CON 121.6 275.8	CLNC DEL 121.6 275.8
------------------------	--	-------------------------	------------------------	-------------------------

DME/DME RNP -0.3 NA



EMERG SAFE ALT 100 NM 16,500

				
				
CATEGORY	A	B	C	D
LNAV MDA*	6260/24	597 (600-½)	6260-1¼	597 (600-1¼)
CIRCLING**	6260-1	597 (600-1)	6360-2 697 (700-2)	6400-2¼ 737 (800-2¼)



REIL Rwy 14
HIRL all Rwys

323° to RW32

RNAV (GPS) RWY 32

SW-1, 07 AUG 2025 to 04 SEP 2025

SW-1, 07 AUG 2025 to 04 SEP 2025