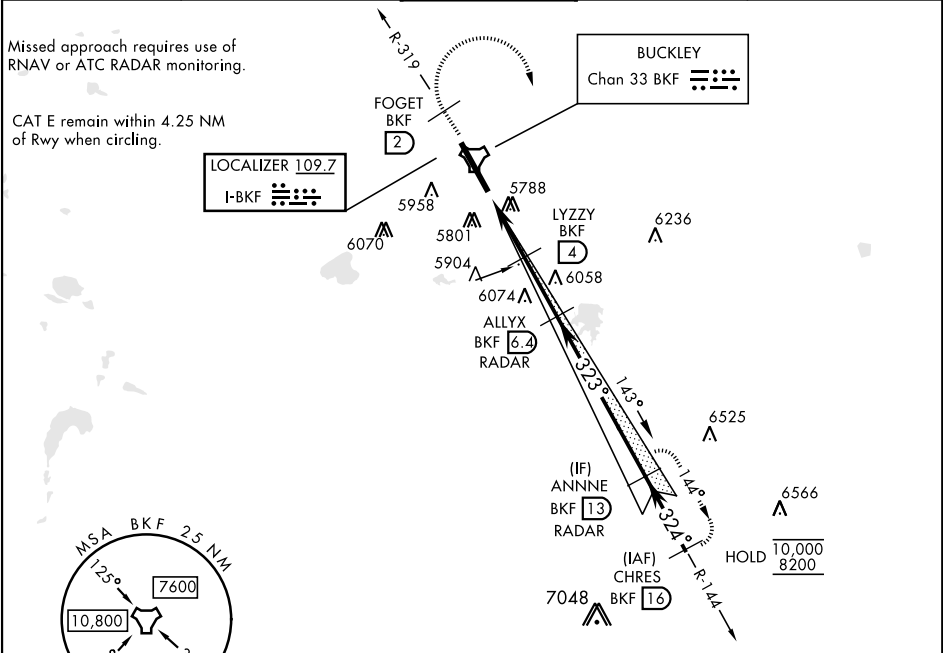


ILS or LOC/DME RWY 32

LOC I-BKF 109.7	APCH CRS 323°	Rwy Idg 11,006 TDZE 5663 Arpt Elev 5663	AL-538 [USAF]	BUCKLEY SFB (KBKF)
* When ALS inop, increase RVR to 40 and vis to ¾ miles. ** When ALS inop, increase CAT AB RVR to 55 and vis to 1 mile, CAT CDE vis to 1¾ miles. *** Circling NA East of Rwy 14-32.			ALSF-1	MISSED APPROACH: Climb on BKF TACAN R-319 to FOGET, then climbing right turn to 8200 and intercept BKF R-144 to ANNNE and hold or as directed by ATC.

ATIS ★ 119.675 259.3	DENVER APP CON 128.45 251.075	TOWER ★ 121.0 291.675	GND CON 121.6 275.8	CLNC DEL 121.6 275.8
--------------------------------	---	---------------------------------	-------------------------------	--------------------------------



ELEV 5663		TDZE 5663	
EMERG SAFE ALT 100 NM 16,500			
8200 BKF R-319	FOGET	ANNNE	
TACAN	HIPER 1.7	3 2	4 1
6600		7400	
0.5 NM		2.3 NM	
2.4 NM		323°	
CATEGORY	A	B	C
S-ILS 32 *	5863/24		200 (200-½)
S-LOC 32 **	6280/24 617 (700-½)		6280-1¾ 617 (700-1¾)
CIRCLING ***	6280-1 617 (700-1)		6360-2 697 (700-2)
			6400-2¼ 737 (800-2¼)
			6420-2¾ 757 (800-2¾)
HIRL Rwy 14-32		REIL Rwy 14	

ILS or LOC/DME RWY 32

SW-1, 07 AUG 2025 to 04 SEP 2025

SW-1, 07 AUG 2025 to 04 SEP 2025