

HI-TACAN RWY 14

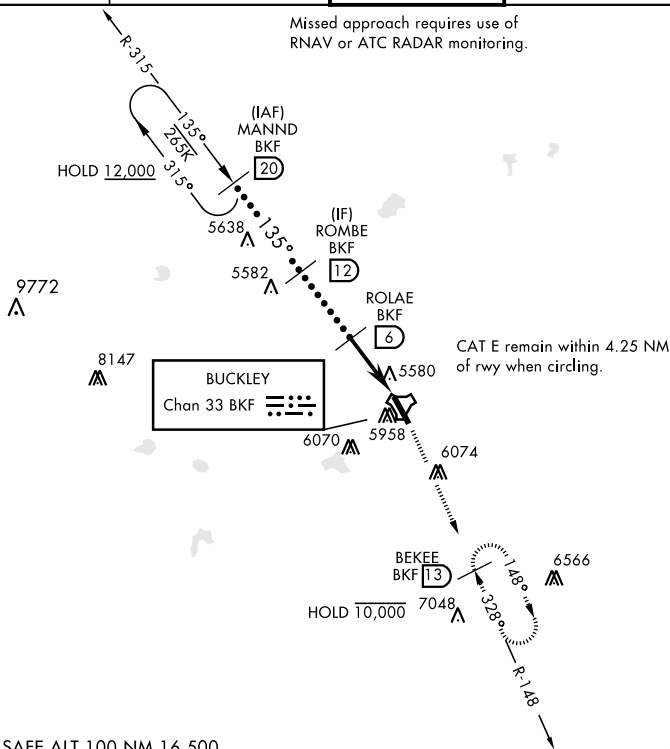
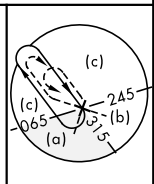
TACAN BKF Chan 33	APCH CRS 135°	Rwy Idg 11,006 TDZE 5592 Arpt Elev 5663	AL-538 [USAF]	BUCKLEY SFB (KBKF)
-----------------------------	-------------------------	--	---------------	--------------------

* Circling NA East of Rwy 14-32.

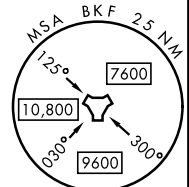
MISSED APPROACH: Climb to 8200 on BKF TACAN R-148 to BEKEE and hold or as directed by ATC.

ATIS ★ 119.675 259.3	DENVER APP CON 128.45 251.075	TOWER ★ 121.0 291.675	GND CON 121.6 275.8	CLNC DEL 121.6 275.8
-------------------------	----------------------------------	--------------------------	------------------------	-------------------------

Missed approach requires use of RNAV or ATC RADAR monitoring.



EMERG SAFE ALT 100 NM 16,500



ELEV 5663

TDZE 5592

135°10' TACAN

5714

5846

TWR 5700

5614

5732

5694

5708

32

31

HIRL Rwy 14-32

REIL Rwy 14

CATEGORY	C	D	E
S-14	5940-1	348 (300-1)	
CIRCLING*	6360-2 697 (700-2)	6400-2½ 737 (800-2¼)	6420-2¾ 757 (800-2¾)

AURORA, COLORADO

39°42'N-104°45'W

BUCKLEY SFB (KBKF)

HI-TACAN RWY 14

Amdt 3 27APR17

SW-1, 07 AUG 2025 to 04 SEP 2025