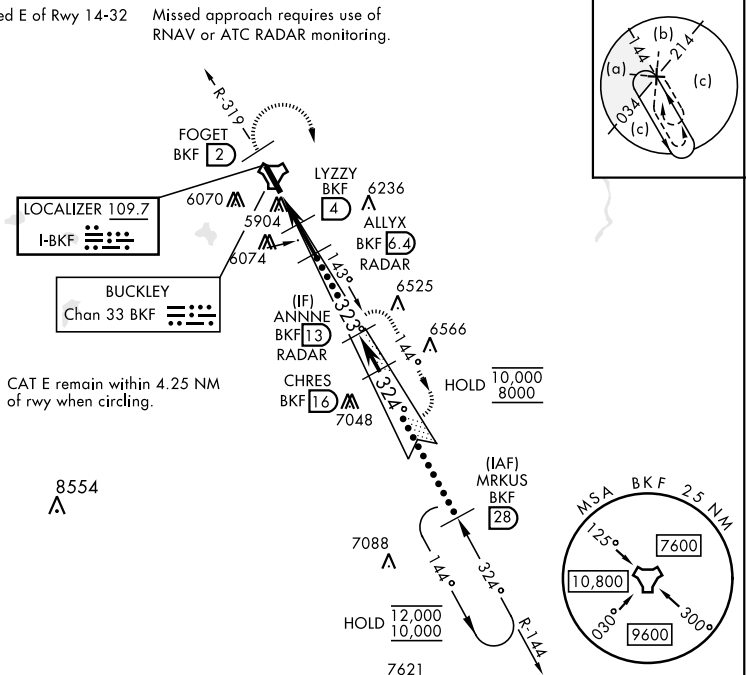


LOC I-BKF <b>109.7</b>	APCH CRS <b>323°</b>	Rwy Idg <b>11,006</b> TDZE <b>5663</b> Arprt Elev <b>5663</b>	AL-538 [USAF]	BUCKLEY SFB (KBKF)
---------------------------	-------------------------	---	---------------	--------------------

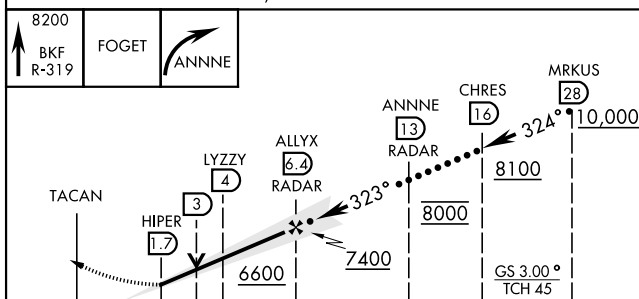
<p>▼ * When ALS inop, increase CAT CDE RVR to 40 and vis to <math>\frac{3}{4}</math> miles.</p> <p>** When ALS inop, increase CAT CDE vis to 1<math>\frac{1}{4}</math> miles.</p>	<p>ALSF-1</p> 	<p>MISSED APPROACH: Climb on BKF TACAN R-319 to FOGET, then climbing right turn to 8200 and intercept BKF R-144 to ANNNE and hold or as directed by ATC.</p>
---	---	--

ATIS ★ 119.675 259.3	DENVER APP CON 128.45 251.075	TOWER ★ 121.0 291.675	GND CON 121.6 275.8	CLNC DEL 121.6 275.8
-------------------------	----------------------------------	--------------------------	------------------------	-------------------------

\*\*\* Circling not authorized E of Rwy 14-32 Missed approach requires use of RNAV or ATC RADAR monitoring.



EMERG SAFE ALT 100 NM 16,500

[illegible]