


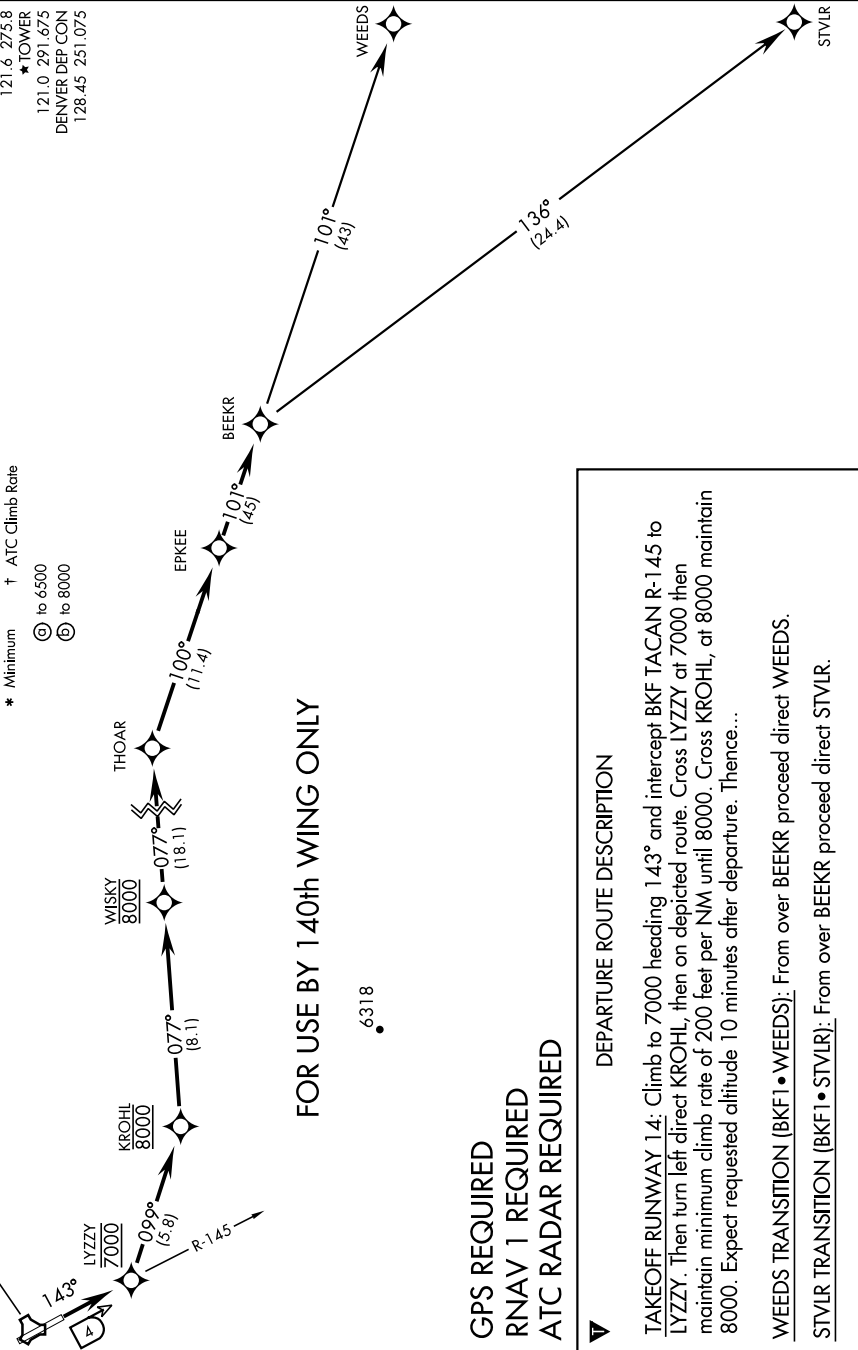
ATIS ★119.675
CUNC DEL
121.6 275.8
GND CON
121.6 275.8
★TOWER
121.0 291.675
DENVER DEP CON
128.45 251.075

Rwy	Knots	60	120	180	240	300	360
★14 Ⓞ	V/V(fpm)	330	660	990	1320	1650	1980
†14 Ⓞ	V/V(fpm)	478	956	1434	1912	2390	2868

★ Minimum † ATC Climb Rate
Ⓞ to 6500
Ⓞ to 8000

BUCKLEY
Chon 33 BKF





FOR USE BY 140th WING ONLY

6318

GPS REQUIRED
RNAV 1 REQUIRED
ATC RADAR REQUIRED

DEPARTURE ROUTE DESCRIPTION

TAKEOFF RUNWAY 14: Climb to 7000 heading 143° and intercept BKF TACAN R-145 to LYZZY. Then turn left direct KROHL, then on depicted route. Cross LYZZY at 7000 then maintain minimum climb rate of 200 feet per NM until 8000. Cross KROHL, at 8000 maintain 8000. Expect requested altitude 10 minutes after departure. Thence...

WEEDS TRANSITION (BKF1•WEEDS): From over BEEKR proceed direct WEEDS.
STVLR TRANSITION (BKF1•STVLR): From over BEEKR proceed direct STVLR.