

DALHART, TEXAS

AL-537 (FAA)

19115

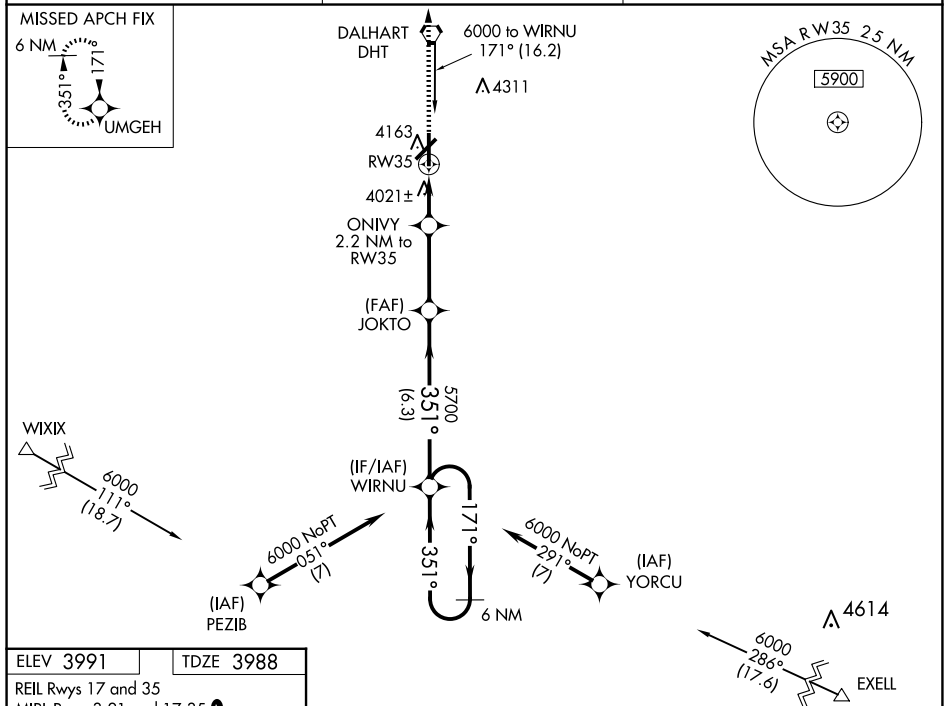
| | | |
|--|------------------------|---|
| WAAS CH 56355 W35A | APP CRS 351° | Rwy Idg 6400 TDZE 3988 Apt Elev 3991 |
|--|------------------------|---|

RNAV (GPS) RWY 35
DALHART MUNI (DHT)

T Circling NA west of Rwy 17-35. DME/DME RNP-0.3 NA. For uncompensated Baro-VNAV systems, LNAV/VNAV NA below -16°C (4°F) or above 52°C (126°F).

MISSED APPROACH: Climb to 6000 direct UMGEH and hold.

| | | |
|------------------------|---|----------------------------------|
| ASOS 134.075 | ALBUQUERQUE CENTER 127.85 285.475 | UNICOM 122.95 (CTAF) 0 |
|------------------------|---|----------------------------------|



MIRL Kwsys 3-21 and 17-35

6 NM Holding Pattern

WIRNU

6000 ← 171° 351° →

GP 3.00° TCH 45

35

← 351° to RW35

5400 X 75

6400 X 75

35

VGS and RNAV glidepath not coincident (VGS Angle 3.00/TCH 39).

JOKTO 5700

ONIVY 2.2 NM to RW35

* 0.8 NM to RW35

RW35

6000 UMGH

* LNAV only

| CATEGORY | A | B | C | D |
|-------------------|-----------------------|---------------------------|--|-----------------------|
| LPV DA | 4238- $\frac{3}{4}$ | 250 (300- $\frac{3}{4}$) | | |
| LNAV/VNAV DA | 4250- $\frac{7}{8}$ | 262 (300- $\frac{7}{8}$) | | |
| LNAV MDA | 4280-1 | 292 (300-1) | | |
| C CIRCLING | 4380-1 389 (400-1) | 4660-1 669 (700-1) | 4660-1 $\frac{3}{4}$ 669 (700-1 $\frac{3}{4}$) | 4660-2 669 (700-2) |