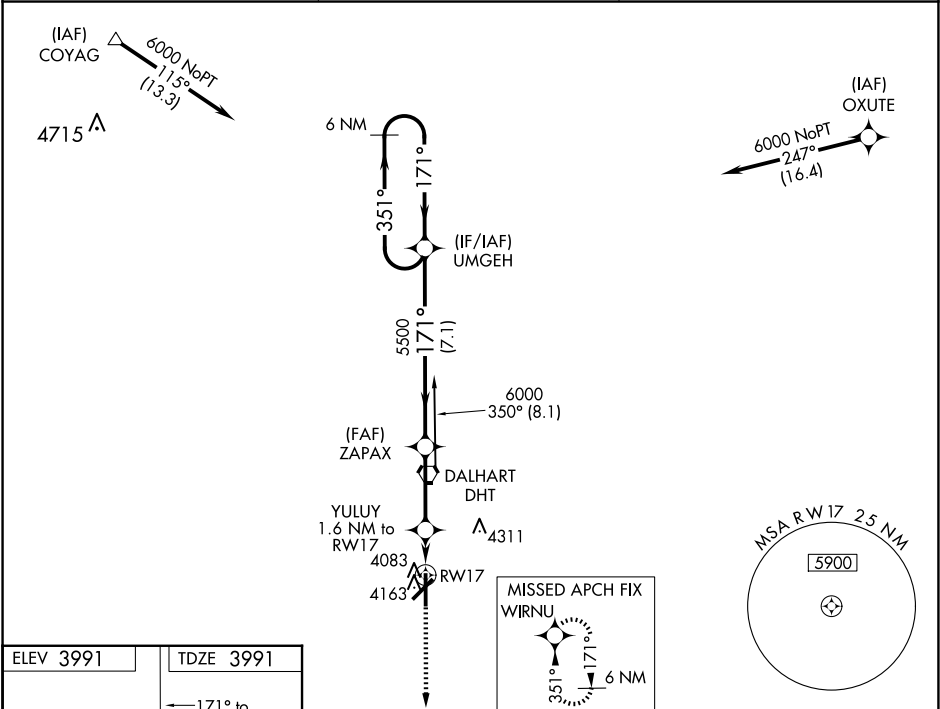


WAAS CH <b>97435</b> <b>W17A</b>	APP CRS <b>171°</b>	Rwy Idg TDZE Apt Elev	<b>6400</b> <b>3991</b> <b>3991</b>
--	------------------------	-----------------------------	---

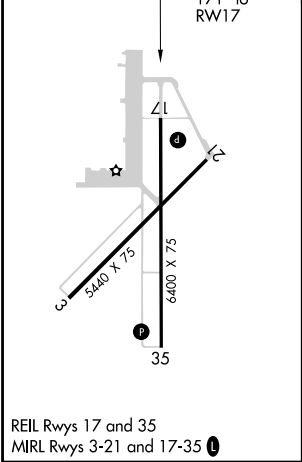
RNAV (GPS) RWY 17  
DALHART MUNI (DHT)

<b>⚠</b> For uncompensated Baro-VNAV systems, LNAV/VNAV NA below -16°C (4°F) or above 51°C (124°F). Circling NA west of Rwy 17-35. DME/DME RNP-0.3 NA.	MISSED APPROACH: Climb to 6000 direct WIRNU and hold.
--	---

ASOS <b>134.075</b>	ALBUQUERQUE CENTER <b>127.85 285,475</b>	UNICOM <b>122.95 (CTAF) 0</b>
------------------------	---	----------------------------------



ELEV 3991	TDZE 3991
-----------	-----------



6000	WIRNU	VGSI and RNAV glidepath not coincident (VGSI Angle 3.00/TCH 25).	UMGEH	6 NM Holding Pattern
*LNAV only	YULUY 1.6 NM to RWY 17	ZAPAX 5500	351° → 6000	GP 3.00° TCH 50
	*1 NM to RWY 17	*4540	5500	
	1	0.6	3 NM	7.1 NM
CATEGORY	A	B	C	D
LPV DA		4241-¾	250 (300-¾)	
LNAV/VNAV DA		4270-⅞	279 (300-⅞)	
LNAV MDA		4340-1	349 (400-1)	
<b>C</b> CIRCLING	4380-1 389 (400-1)	4660-1 669 (700-1)	4660-1¾ 669 (700-1¾)	4660-2 669 (700-2)