

WAAS CH <b>77544</b> <b>W17A</b>	APP CRS <b>175°</b>	Rwy Idg TDZE <b>753</b> Apt Elev <b>754</b>	<b>5868</b>
--	------------------------	---	-------------

RNAV (GPS) RWY 17

COFFEYVILLE MUNI (CFV)

RNP APCH.

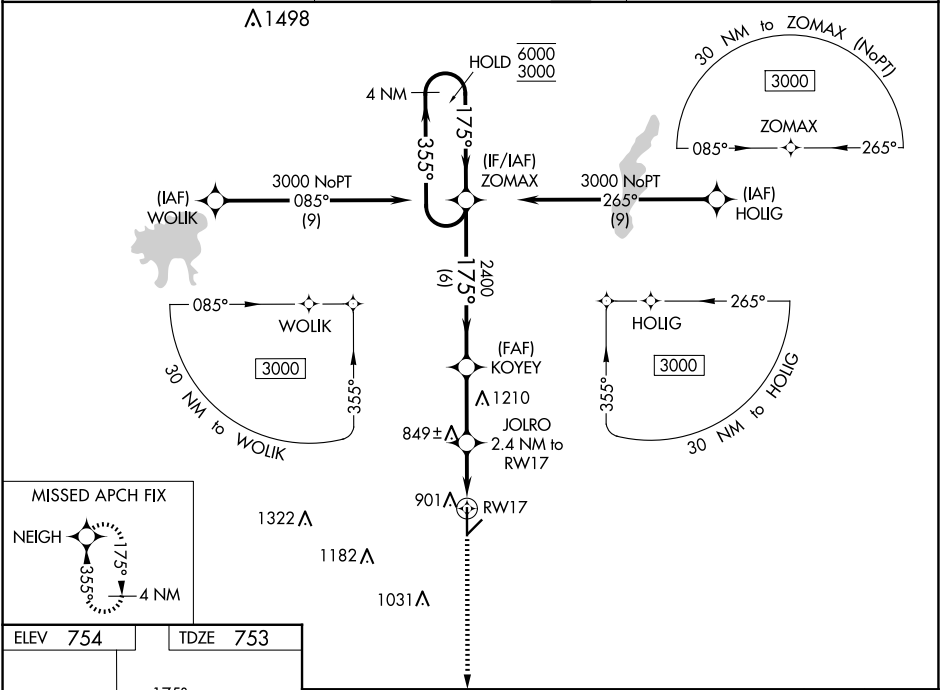
▼

⚠

Circling Rwy 4, 22 NA at night. Rwy 17 helicopter visibility reduction below ¾ SM NA. For uncompensated Baro-VNAV systems, LNAV/VNAV NA below -16°C or above 54°C.

MISSED APPROACH: Climb to 2500 direct NEIGH and hold.

ASOS <b>121.275</b>	KANSAS CITY CENTER <b>128.6 282.325</b>	UNICOM <b>123.0 (CTAF) 0</b>
------------------------	--	---------------------------------



ELEV 754

TDZE 753

Diagram details: The missed approach procedure starts at the NEIGH fix. A 4 NM segment leads to a climb to 2500. A turn to 175° is indicated. The route then leads to a climb to 35. Distances and altitudes are marked throughout the procedure.

REIL Rws 17 and 35 0

MIRL Rwy 17-35 0

ZOMAX 4 NM Holding Pattern				2500	NEIGH
6000 ← 355° 3000 175° →				*LNAV only	
GP 3.00° TCH 40				*1.2 NM to RW17	
ZOMAX				RW17	
KOYEY				2400	
JOLRO 2.4 NM to RW17				*1.2 NM to RW17	
*1520				RW17	
6 NM				2.7 NM	
1.2 NM				1.2 NM	
CATEGORY	A	B	C	D	
LPV DA	1003-1 250 (300-1)				
LNAV/VNAV DA	1062-1 309 (400-1)				
LNAV MDA	1160-1 407 (500-1)		1160-1½ 407 (500-1½)		
CIRCLING	1220-1 466 (500-1)		1300-1½ 546 (600-1½)		1500-2½ 746 (800-2½)