

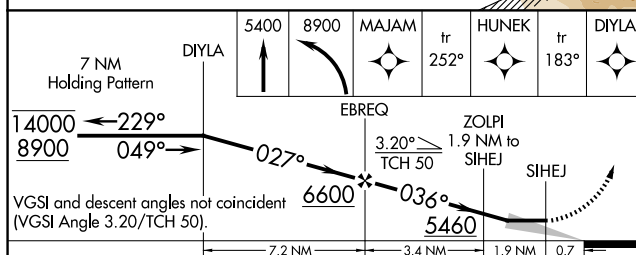
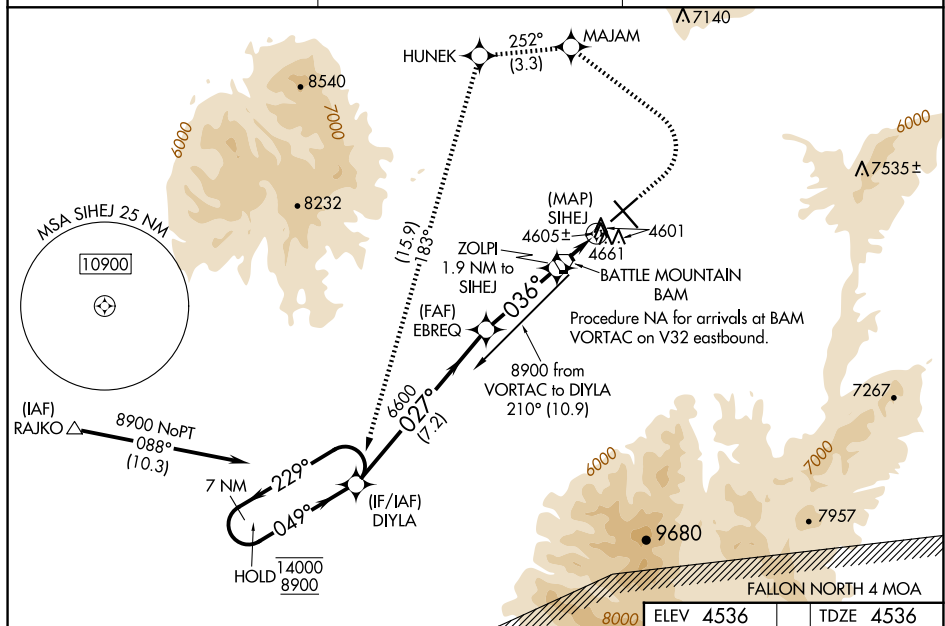
# RNAV (GPS) RWY 4


## BATTLE MOUNTAIN (BAM)

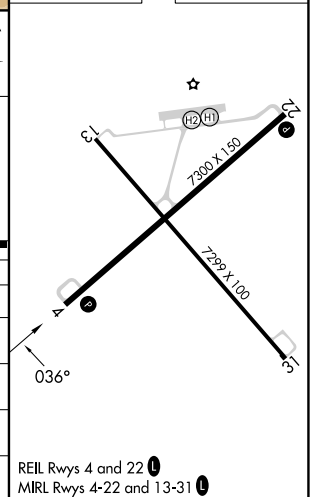
**MISSED APPROACH:** (Do not exceed 175K until DNYLA) Climb to 5400 then climbing left turn to 8900 direct MAJAM and on track 252° to HUNEK and on track 183° direct DNYLA and hold.

\*Missed approach requires minimum climb of 222 feet per NM to 6480; if unable to meet climb gradient, see LP minimums.

\*Missed approach requires minimum climb of 218 feet per NM to 7520; if unable to meet climb gradient, see LNAV minimums.

UNICOM  
122.8 (CTAF) 

CATEGORY	A	B	C	D
LP MDA*	4860-1 324 (400-1)			NA
LNAV MDA#	5020-1 484 (500-1)	5020-1 $\frac{3}{8}$ 484 (500-1 $\frac{3}{8}$ )		NA
LP MDA	5240-1 704 (800-1)	5240-2 704 (800-2)		NA
LNAV MDA	5460-1 $\frac{1}{4}$ 924 (1000-1 $\frac{1}{4}$ )	5460-2 $\frac{1}{2}$ 924 (1000-2 $\frac{1}{2}$ )		NA
 CIRCLING	5460-1 $\frac{1}{4}$ 924 (1000-1 $\frac{1}{4}$ )	5460-2 $\frac{3}{4}$ 924 (1000-2 $\frac{3}{4}$ )		NA



SW-4, 07 AUG 2025 to 04 SEP 2025