

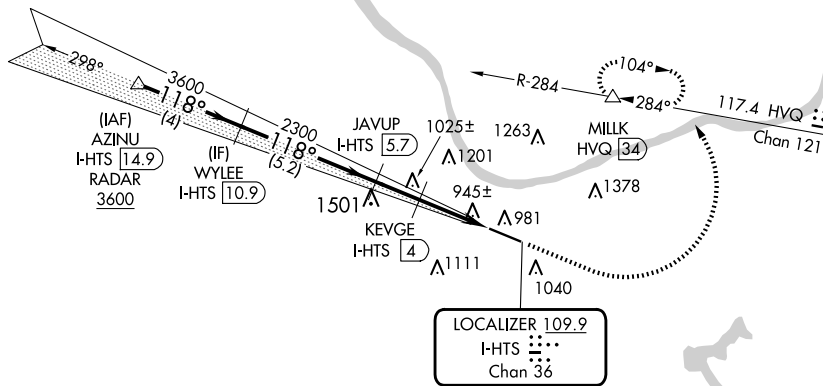
ILS or LOC RWY 12
TRI-STATE/MILTON J FERGUSON FLD (HTS)

MISSED APPROACH: Climb to 2800 then climbing left turn to 4000 on heading 005° and HVQ VOR/DME R-284 to MILLK/HVQ VOR/DME 34 DME and hold, continue to climb-in-hold to 4000.

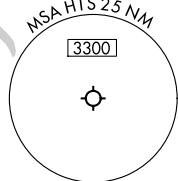
T For inop ALS, increase S-LOC 12 Cats C and D visibility
A to RVR 5500.
*RVR 1800 authorized with use of FD or AP or HUD to DA.



ATIS 125.2	HUNTINGTON APP CON 119.75 270.1	HUNTINGTON TOWER 118.5 270.1	GND CON 121.9	CLNC DEL 118.05
---------------	------------------------------------	---------------------------------	------------------	--------------------



CAUTION: Fuel burning stacks 2 miles west of Rwy 12 may be mistaken for MALSR.



AZINU I-HTS 14.9 RADAR		WYLEE I-HTS 10.9		JAVUP I-HTS 5.7		2800 ↑		4000 hdg 005°		HVQ R-284		MILLK △	
3600 GS 3.00° TCH 56		3600 118°		2300 1760		KEVGE I-HTS 4		I-HTS 2.2		I-HTS 1.3			
4 NM		5.2 NM		1.7 NM		1.8 NM		1 NM					
CATEGORY		A		B		C		D					
S-ILS 12 *				1028/24		200 (200-½)							
S-LOC 12		1200/24		372 (400-½)		1200/35		372 (400-½)					
CIRCLING		1300-1 472 (500-1)		1380-1 552 (600-1)		1520-2 692 (700-2)		1740-3 912 (1000-2)					

